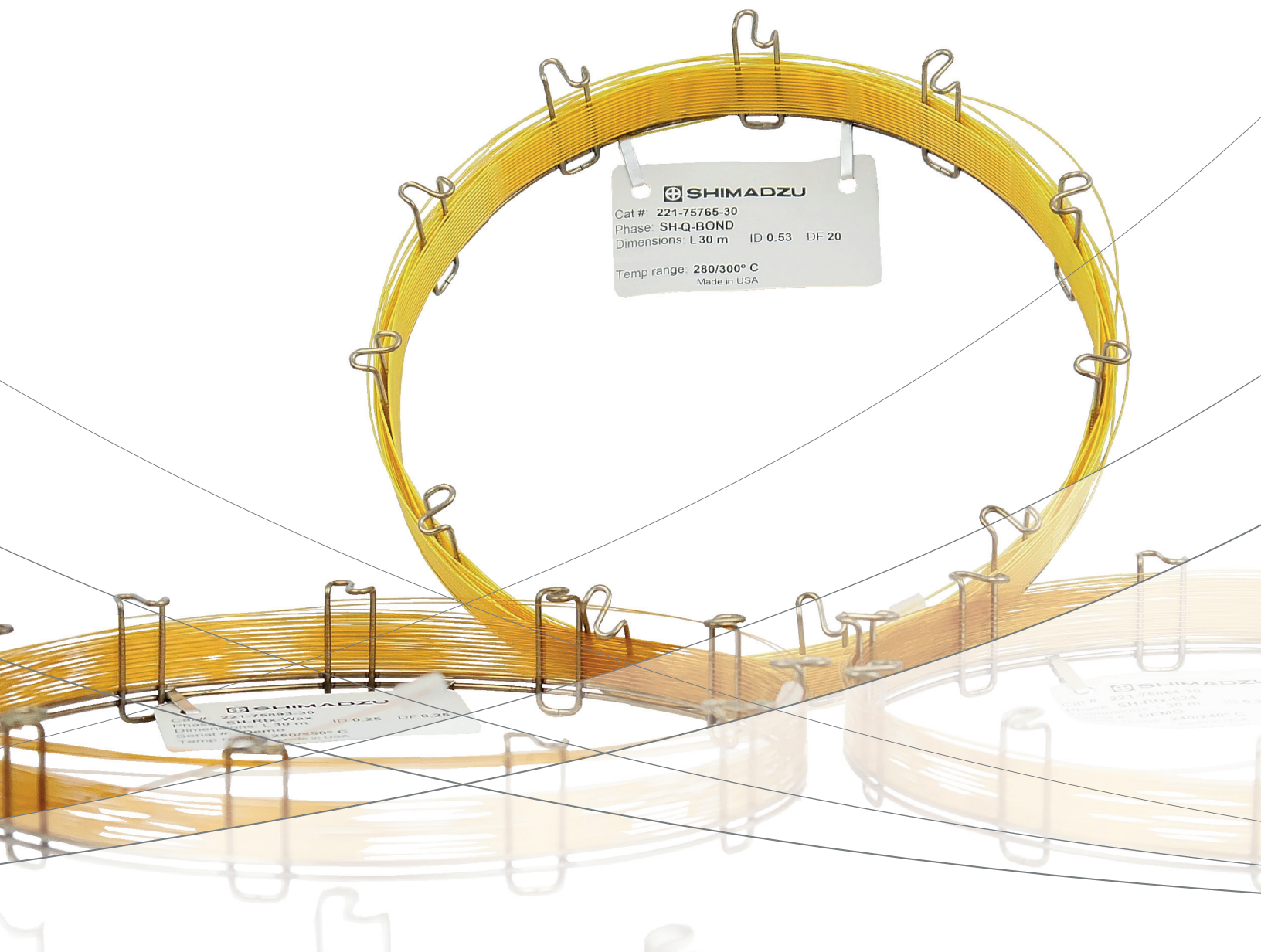


CoreFocus

Gas Chromatograph Series Columns

GC Columns Guidebook



SH-GC-Columns

Shimadzu offers a broad range of columns, suitable for every GC/GCMS-system. Various stationary phases are available in a variety of dimensions, suitable for many different applications.

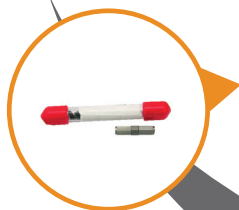
SH-GC column line-up:

- **SH-I** Superior inert, high performance columns
- **SH** Robust and reliable general purpose columns
- **MetalX** Metal column for high temperature applications
- **Dedicated Columns** for specific use, 1614, CLP, BAC, WAX, ...
 - PLOT Columns
 - Fast GC Columns
 - Guard Columns



Genuine Spares and Accessories

Shimadzu approved quality – valves, connectors, nuts ... and further parts from the original instrument manufacturer help you to ensure the best function of your instrument.



Gas Filter

Impurities in gases, such as hydrocarbons, moisture and oxygen, can contaminate the gas line and instrument, cause column degradation and affect the accuracy of your analytical results, which may lead to instrument downtime. Even when using high-purity gases, contaminants may result from pressure regulators or other connections in the gas line. Therefore, an additional gas filter is essential to **ensure highest security and performance**.



Ferrules and Unions

Shimadzu provides an array of connection types to use in the GC, each selected to ensure the best connection solution is achieved. The correct selection of the connection type will eliminate dead volumes, leaks during temperature cycling and problems with mismatched tubing sizes.



Shimadzu Consumables for GC/GCMS Analytics

The One-Stop-Supplier for all Your Needs

Inlet Liner

The GC inlet liner is where the sample is introduced and vaporized into the gaseous phase. The geometry of each Shimadzu inlet liner is important and the correct choice of inlet liner can significantly improve the chromatographic performance. Inlet liner deactivation and quartz wool quantity and position are essential to ensure reproducible and accurate sample introduction of each sample type.



GC Vials and Caps

Shimadzu offers a broad range of vials and caps for GC/GCMS and Headspace applications. You can either assemble your set of vials and caps according to your demands or choose from pre-assembled kits. The portfolio covers vials for all needs, ... from certified GCMS vials, via standard vials to accessories like vial-boxes and crimping-tools.



Syringes

Shimadzu syringes for both manual and autosampler offer a superior performance, with an improved durability, precision and accuracy.



SPME

Solid Phase Microextraction (SPME) is a solvent-free sample preparation technology. The fibers and arrows are coated with a sorbent, which extracts the analytes of interest from the sample. Shimadzu offers a wide variety of SPME fibers and arrows based on the **SMART-technology of our AOC-6000plus autosampler**, suitable for a broad range of applications.



Inlet Septa

Low-bleed septa are not completely free of bleeding. The type of bleeding that occurs varies with the septa, and results in different patterns on chromatograms. Therefore, Shimadzu septa are selected to contribute to low bleed and optimum sealing for many injections.



Find our full portfolio of columns and accessories
www.shimadzu.eu/columns-and-consumables



Find all products 24/7 in our Webshop
www.shimadzu.eu/Shimadzu-goes-webshop

Contents

Fused Silica	Page	Specific Use	Page
SH-I-1MS	9	Acidic Compounds Analysis	
SH-I-1HT	11	SH-PolarD	41
SH-I-5MS	10		
SH-I-5Sil MS	12	Basic Compounds Analysis	
SH-I-5HT	11	SH-5 Amine	40
SH-I-17	14	SH-35 Amine	40
SH-I-17Sil MS	15	SH-Volatile Amine	37
SH-I-35Sil MS	14	SH-PolarX	42
SH-I-624Sil MS	16		
SH-I-1301Sil MS	17	Blood Alcohol Analysis	
SH-I-PAH	15	SH-BAC Plus1	39
SH-I-XLB	13	SH-BAC Plus2	39
SH-1	18		
SH-1 PONA	18	Pesticides Analysis	
SH-5/5MS	19-20	SH-OPP2	34
SH-20	21	SH-CLP	35
SH-35	22	SH-CLP II	35
SH-35MS	22		
SH-50	23	PCBs Analysis	
SH-65	23	SH-PCB	37
SH-65TG	24		
SH-200/200MS	27	Volatile organic pollutants Analysis	
SH-225	29	SH-VRX	37
SH-440	29	SH-VMS	36
SH-502.2	29		
SH-624	25	Fast GC Columns	49
SH-1301	24		
SH-1614	33	Guard Column	
SH-1701	26	Integrated Guard Columns	52
SH-2330	30	SH-I Guard / Retention Gap Columns	50
SH-2560	30	SH-IP Guard Columns	51
SH-Wax	31	SH Guard Column Polar Deactivated	51
SH-FAME	38	SH Guard Column Base Deactivated	51
SH-PolarWax	32	SH-MetalX-Siltek Guard Column	52
SH-PolarWAX MS	43	Accessories and Supplies	53
Fused Silica PLOT			
SH-Alumina BOND/KCl	44		
SH-Alumina BOND/Na ₂ SO ₄	44		
SH-Msieve 5A	45		
SH-Q-BOND	46		
SH-QS-BOND	46		
SH-U-BOND	46		
SH-Particle Trap	50		
Stainless Steel (Siltek)			
SH-MetalX-1	47		
SH-MetalX-1HT SimDist	47		
SH-MetalX-5	47		
SH-MetalX-1701	48		
SH-MetalX-WAX	48		
SH-MetalX Biodiesel TG	48		

Capillary Columns

High-Performance Columns

Check the structure of the target components

Investigate the structure (functional group), boiling point, nature, stability, and other properties of the target component.



Select the stationary phase

Selecting a stationary phase of chemical properties close to those of the target component helps increase retention force and prevent drops in separation caused by defective peak shape.

Stationary Phase	100% dimethyl polysiloxane	** % diphenyl / ** % dimethyl polysiloxane	** % cyanopropylphenyl / ** % dimethyl polysiloxane	Trifluoropropyl methyl polysiloxane	Polyethylene glycol
Polarity	Non-polar	Low to Medium	Medium	Medium to High	High
Separation Properties	Elution in boiling point order	Aromatic compounds are retained by phenyl group content	Effective for separation of oxygenated compounds, isomers, etc.	Uniquely retains compounds containing halogens	Strong retention of polar compounds
Applications	Gasoline and solvent related	Flavors, environmental related, aromatic compounds	Pesticides, PCBs, oxygenated compounds	Halogenated compounds, polar compounds, solvents	Polar compounds, solvents, Flavors, FAME
Columns	SH-I-1MS SH-I-1HT SH-1 SH-MetalX	SH-I-5MS SH-I-5HT SH-I-17 SH-5 SH-5MS SH-20 SH-35 SH-65 SH-MetalX-5	SH-1301 SH-624 SH-1701	SH-200 SH-200MS	SH-Wax SH-PolarWax



Determine the column size

Determine the column size according to the sample amount to inject while referring to the following table.

Inner Diameter	0.18 mm	Has extremely high resolution but its sample load is small. <ul style="list-style-type: none"> • Samples having a complex mixed system • Suited to split injection
	0.25 mm 0.32 mm	Has high resolution and a moderate sample load <ul style="list-style-type: none"> • Supports samples having a complex mixed system • Suited to split/splitless injection
	0.53 mm	Has satisfactory resolution and a large sample load <ul style="list-style-type: none"> • Suited to purity measurement and analysis of trace components • Used in direct injection, on-column injection, and large-volume injection • Can be easily replaced from packed column
Film Thickness	Thick Film	<ul style="list-style-type: none"> • Good separation of high-concentration components • Suited to purity analysis
	Thin Film	<ul style="list-style-type: none"> • Fast elution of high boiling point compounds • Suited to the analysis of medium to high boiling point compounds
Length		When twice as long (for fixed-temperature analysis) <ul style="list-style-type: none"> • The analysis time will be twice • The degree of separation will be 1.4 times

Capillary Columns

Cross-Reference

Shimadzu	Stationary Phase	USP	Similar Phases						Page
			Agilent	Restek	SGE	Phenomenex	Supelco	Alltech	
High-Performance Columns									
SH-I-1MS	100% dimethyl polysiloxane	G1, G2, G38	HP-1ms UI HP-1ms, DB-1ms UI DB-1ms Ultra-1 VF-1ms	Rxi-1MS	BP-1	ZB-1 ZB-1ms	SPB-1 Equity-1	AT-1ms	9
SH-I-5MS	5% diphenyl / 95% dimethyl polysiloxane	G27, G36	HP-5ms UI HP-5ms DB-5 Ultra-2 CP Sil 8 CB	Rxi-5MS	BP-5ms	ZB-5 ZB-5msi	SPB-5 Equity-5	AT-5ms	10
SH-I-1HT	100% dimethyl polysiloxane	-	DB-1HT	Rxi-1HT	-	ZB-1HT inferno	-	AT-1ht	11
SH-I-5HT	5% diphenyl / 95% dimethyl polysiloxane	-	DB-5HT VF-5HT	Rxi-5HT	HT-5	ZB-5HT inferno	-	-	11
SH-I-5Sil MS	1,4-bis(dimethylsiloxy)phenylene di- methyl polysiloxane	G27, G36	DB-5ms UI DB-5ms VF-5ms	Rxi-5Sil MS	BPX-5	ZB-5MS ZB-Semi-Volatiles ZB-5MS plus	SLB-5ms	-	12
SH-I-XLB	Non-disclosure	-	DB-XLB VF-Xms	Rxi-XLB	-	ZB-MR1 ZB-XLB	-	-	13
SH-I-17	50% diphenyl / 50% dimethyl polysiloxane	G3	HP-17 DB-17 DB-17HT DB-608	Rxi-17	-	ZB-50	SPB-17	-	14
SH-I-35Sil MS	proprietary phase	G42	DB-35ms DB-35ms UI VF-35ms	Rxi-35Sil MS	BPX-35 BPX608	ZB-MR2	-	-	14
SH-I-17Sil MS	proprietary phase	G17	DB-17ms VF-17ms	Rxi-17Sil MS	BPX-50	-	-	-	15
SH-I-PAH	proprietary phase	G51	-	Rxi-PAH	-	-	-	-	15
SH-I-624Sil MS	proprietary phase	G43	DB-624 VF-624ms CP-Select 624 CB	Rxi-624Sil MS	BP-624	-	-	-	16
SH-I-1301Sil MS	silylene-based cyano	G43	VF-1301ms	Rxi-1301Sil MS	-	-	-	-	17
General Purpose Columns									
SH-1	100% dimethyl polysiloxane	G1, G2, G38	HP-1 DB-1 CP Sil5CB	Rtx-1	BP-1	ZB-1	SPB-1	AT-1 EC-1	18
SH-5	5% diphenyl / 95% dimethyl polysiloxane	G27, G36	HP-5 DB-5 CP Sil8CB	Rtx-5	BP-5	ZB-5	SPB-5	AT-5 EC-5	19
SH-5MS	5% diphenyl / 95% dimethyl polysiloxane	G27, G36	HP-5 DB-5 CP Sil8CB	Rtx-5MS	BP-5	ZB-5	SPB-5	AT-5 EC-5	20
SH-20	20% diphenyl / 80% dimethyl polysiloxane	G28, G32	-	Rtx-20	-	-	SPB-20	AT-20 EC-20	21

Shimadzu	Stationary Phase	USP	Similar Phases						Page
			Agilent	Restek	SGE	Phenomenex	Supelco	Alltech	
SH-35/ SH-35MS	35% diphenyl / 65% dimethyl polysiloxane	G42	HP-35 DB-35	Rtx-35	BPX-35 BPX-608	ZB-35	SPB-35 SPB-608	AT-35 AT-35ms	22
SH-50	100% methyl phenyl polysiloxane	G3	HP-50+ CP Sil24CB	Rtx-50	-	-	SPB-50	AT-50	23
SH-65	65% diphenyl / 35% dimethyl polysiloxane	-	-	Rtx-65	-	-	-	-	23
SH-65TG	65% diphenyl / 35% dimethyl polysiloxane	-	CP-TAP-CB	-	-	-	-	-	24
SH-1301	6% cyanopropylphenyl / 94% dimethyl polysiloxane	G43	DB-1301 CP-1301 VF-1301ms	-	-	-	-	AT-1301	24
SH-624	6% cyanopropylphenyl / 94% dimethyl polysiloxane	G43	HP-624 DB-624 DB-624 UI VF-624ms	Rtx-624	BP-624	ZB-624	SPB-624	AT-624	25
SH-1701	14% cyanopropylphenyl / 86% dimethyl polysiloxane	G46	DB-1701P DB-1701 CP Sil19CB VF-1701ms VF-1701 Pesticides	Rtx-1701	BP-10	ZB-1701 ZB-1701P	SPB-1701	AT-1701	26
SH-200/ SH-200MS	Trifluoropropylmethyl polysiloxane	G6	DB-210 DB-200 VF-200ms	Rtx-200	-	-	-	AT-210	27
SH-225	50% cyanopropylmethyl / 50% phenylmethyl polysiloxane	G7, G19	DB-225 CP Sil43CB	Rtx-225	BP-225	-	SPB-225	AT-225	29
SH-440	modified polysiloxane (unique phase)	-	-	Rtx-440	-	-	-	-	29
SH-502.2	diphenyl / dimethyl polysiloxane	-	DB-502.2	Rtx-502.2	-	-	-	-	29
SH-2330	90% biscyanopropyl / 10% cyanopropylphenyl polysiloxane (Non-bonded)	G5, G8, G48	VF-23ms	Rtx-2330	BPX-70	-	SP-2330 SP-2331 SP-2380	AT-Silar90	30
SH-2560	biscyanopropyl / polysiloxane	G5	HP-88 CP-Sil88	Rtx-2560	-	-	SP-2560	-	30
SH-Wax	Polyethylene glycol	G14, G15, G16, G20, G39	DB-Wax	Rtx-Wax	BP-20	ZB-Wax	-	AT-WAXms EC-WAX	31
SH-PolarWax	Polyethylene glycol	G14, G15, G16, G20, G39	HP-Innowax CP-Wax 52CB VF-WAX MS	Stabilwax	-	ZB-Wax Plus	Supelco Wax-10	AT-WAX EC-WAX	32
Dedicated Columns									
SH-1614	Ideal for analysis of PBDE	-	-	Rtx-1614	-	-	-	-	33
SH-OPP2	Ideal for analysis of organophosphorus pesticides	-	-	Rtx-OPP2	-	-	-	-	34
SH-CLP/ SH-CLP II	Ideal for analysis of organochlorine pesticides	-	DB-CLP1 /DB-CLP2	Rtx-CLP	-	-	-	-	35
SH-VMS	Ideal for analysis of volatile organic pollutants	-	-	Rtx-VMS	-	-	-	-	36
SH-Volatile Amine	Ideal for analysis of volatile amines	-	CP-Volamine	Rtx-Volatile Amine	-	-	-	-	37

Shimadzu	Stationary Phase	USP	Similar Phases						Page
			Agilent	Restek	SGE	Phenomenex	Supelco	Alltech	
SH-PCB	Dedicated to PCBs analysis	-	-	Rtx-PCB	-	-	-	-	37
SH-VRX	Ideal for analysis of volatile organic pollutants	-	-	Rtx-VRX	-	-	-	-	37
SH-FAME	Ideal for analysis of FAMES	G16	Select FAME	FameWax	-	-	Omega wax	ATAquaWax, AT-FAME	38
SH-BAC Plus 1/ SH-BAC Plus 2	Ideal for analysis of alcohol compounds in blood	-	DB-ALC1 / DB-ALC2	Rtx-BAC Plus 1	-	ZB-BAC-1 / ZB-BAC-2	-	-	39
SH-5 Amine/ SH-35 Amine	Ideal for analysis of amines	-	-	Rtx-5 Amine	-	-	-	-	40
SH-PolarD	Ideal for analysis of free acid	G25, G35	HP-FFAP, DB-FFAP, VF-DA, CP-Wax 58 CB, CP-FFAP CB	Stabilwax-DA	BP-21	ZB-FFAP	Nukol	ATAquaWax-DA, AT-1000, EC-1000	41
SH-PolarX	Ideal for analysis of amines	-	CAM, CP-Wax 51 for Amines	Stabilwax-DB	-	-	Carbowax Amine	AT-CAM	42
SH-PolarWAX MS	Ideal for analyses of food, flavor, fragrance, industrial chemical and solvent	G14, G15, G16, G20, G39	-	Stabilwax	-	-	-	AT-WAXms	43
PLOT Columns									
SH-Alumina BOND/Na2SO4	Aluminum oxide with Na2SO4 deactivation	-	GS-ALUMINA, CP-Al2O3/Na2SO4	Rt-Alumina BOND/Na2SO4	-	-	Alumina sulfate PLOT	AT-Alumina	44
SH-Alumina BOND/KCl	Aluminum oxide with KCl deactivation	-	GS-Alumina KCl, HP-PLOT Al2O3 KCl, CP-Al2O3/KCl	Rt-Alumina BOND/KCl	-	-	Alumina chloride PLOT	-	44
SH-Msieve 5A	Molecular Sieve 5A	-	HP-PLOT Molesieve, CP-Molsieve 5A	Rt-Msieve 5A	-	-	Mol Sieve 5A PLOT	AT-Mole Sieve	45
SH-Q-BOND	100% divinylbenzene porous polymer	-	HP-PLOT Q, CP-PoraPLOT Q, CP-PoraBOND Q	Rt-Q-BOND	-	-	Supel-Q PLOT	AT-Q	46
SH-QS-BOND	Intermediate polarity porous polymer	-	GS-Q	Rt-QS-Bond	-	-	-	-	46
SH-U-BOND	Divinylbenzene ethylene glycol / dimethylacrylate porous polymer	-	HP-PLOT U, CP-PoraPLOT U, CP-PoraBOND U	Rt-U-BOND	-	-	-	-	46
Metal Columns									
SH-MetalX-1	100% dimethyl polysiloxane	G1, G2, G38	HP-1 DB-PS1 CP-Sil 5 CB	MXT-1	BP-1	ZB-1	SPB-1	AT-1 EC-1	47
SH-MetalX-1HT SimDist	100% dimethyl polysiloxane	-	CP-SimDist UltiMetal, DB-HT SimDis ProSteel	MXT-1HT SimDist	-	ZB-1X SimDist	-	-	47
SH-MetalX-5	5% diphenyl / 95% dimethyl polysiloxane	G27, G36	HP-5 DB-5, CP-Sil 8 CB	MXT-5	BP-5	ZB-5	SPB-5	EC-5 AT-5	47
SH-MetalX-1701	non-disclosure	G46	DB-1701P DB-1701 CP-Sil 19 CB VF-1701ms VF1701 Pesticides	MXT-1701	BP-10	ZB-1701 ZB-1701P	Equity-1701	AT-1701	48
SH-MetalX-WAX	polyethylene glycol	G14, G15, G16, G20, G39	HP-INNOWax CP-Wax 53 CB VF-WAX MS	MXT-Wax	-	ZB-WAXplus	Supelco-wax-10	AT-WAX	48
SH-MetalX Biodiesel TG	non-disclosure	-	-	MXT-Biodiesel TG	-	-	METBiodiesel	-	48

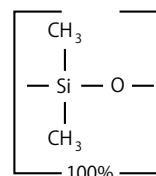
Capillary Columns

High-Performance Columns

SH-I-1MS

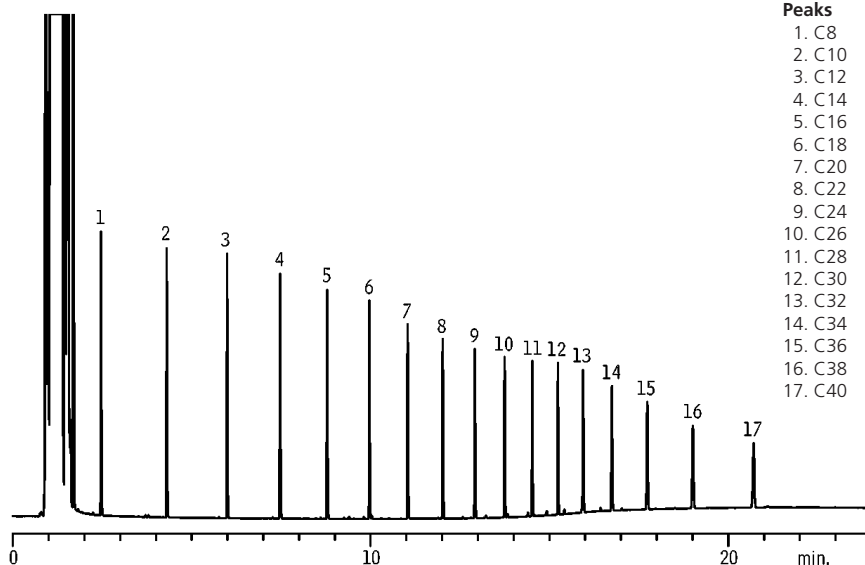
- Non-polar phase: Crossbond 100% dimethyl polysiloxane
- Tested and guaranteed for ultra-low bleed; improved signal-to-noise ratio for better sensitivity and mass spectral integrity.
- General-purpose columns for arson accelerants, essential oils, hydrocarbons, pesticides, PCB congeners (e.g., Aroclor mixes), sulfur compounds, amines, solvent impurities, simulated distillation, oxygenates, gasoline range organics (GRO), refinery gases.
- Equivalent to USP G1, G2, G38 phase.
- Similar phases: Rxi-1MS, HP-1ms UI, HP-1ms, DB-1ms UI, DB-1ms, Ultra-1, VF-1ms, SPB-1, Equity-1, BP-1, ZB-1, ZB-1ms, AT-1ms

SH-I-1MS Structure



ID	df	Temp. Range	12 m	20 m	25 m	50 m
0.15 mm	0.15 µm	-60 to 330/350 °C	-	227-36001-01	-	-
	2.00 µm		-	227-36002-01	-	-
0.18 mm	0.18 µm		-	221-75921-20	-	-
	0.36 µm		-	227-36003-01	-	-
0.20 mm	0.33 µm		227-36004-03	-	227-36004-01	227-36004-02
	ID		df	Temp. Range	15 m	30 m
0.25 mm	0.25 µm	-60 to 330/350 °C	227-36005-01	221-75923-30	227-36005-02	
	0.50 µm		227-36006-01	227-36006-02	221-75924-60	
	1.00 µm		227-36007-01	227-36007-02	227-36007-03	
0.32 mm	0.25 µm		227-36008-01	221-75926-30	227-36008-02	
	0.50 µm		227-36009-01	227-36009-02	227-36009-03	
	1.00 µm		-	227-36010-01	221-75928-60	
0.53 mm	4.00 µm		-	227-36011-01	-	
	0.50 µm		227-36012-01	227-36012-02	-	
	1.00 µm		227-36013-01	227-36013-02	-	
	1.50 µm	227-36014-01	227-36014-02	227-36014-03		

Petroleum Hydrocarbons (TPH)



Peaks
 1. C8
 2. C10
 3. C12
 4. C14
 5. C16
 6. C18
 7. C20
 8. C22
 9. C24
 10. C26
 11. C28
 12. C30
 13. C32
 14. C34
 15. C36
 16. C38
 17. C40

Conditions
 Instrument: GC-2010
 Column: SH-I-1MS, 20m, 0.18 mm ID, 0.18 µm (P/N: 221-75921-20)
 Sample: Florida TRPH Standard, 500 µg/ml each component in hexane
 Inj. Vol.: 0.5 µL, split (split ratio 20:1)
 Inj. Temp.: 275 °C
 Carrier Gas: Hydrogen, constant linear velocity mode, 55 cm/sec.
 Oven Temp.: 40 °C (hold 1 min.) to 330 °C at 20 °C/min. (hold 10 min.)
 Detector: FID, 350 °C

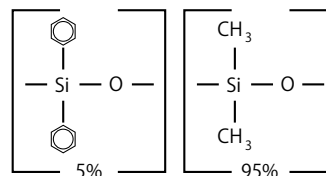
Capillary Columns

High-Performance Columns

SH-I-5MS

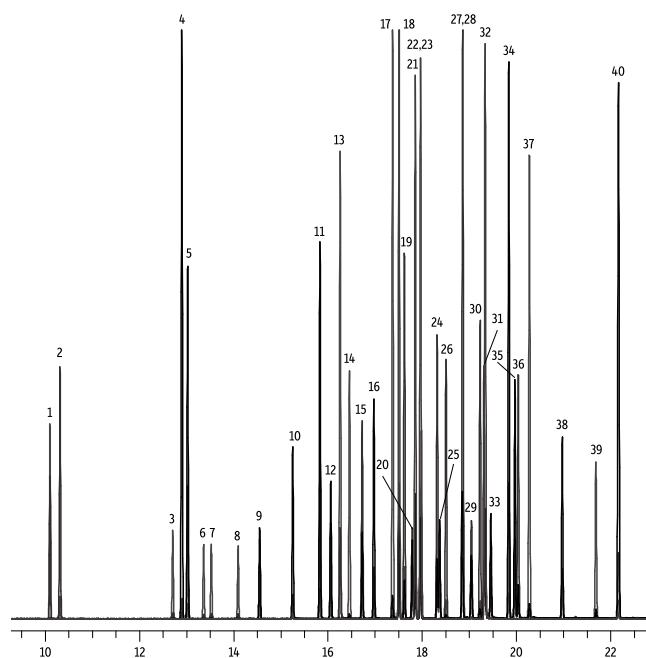
- Low-polarity phase: Crossbond 5% diphenyl / 95% dimethyl polysiloxane
- Tested and guaranteed for ultra-low bleed; improved signal-to-noise ratio for better sensitivity and mass spectral integrity.
- General-purpose columns for semi-volatiles, phenols, amines, residual solvents, drugs of abuse, pesticides, PCB congeners (e.g., Aroclor mixes), solvent impurities.
- Equivalent to USP G27 and G36 phases.
- Similar phases: Rxi-5MS, HP-5ms UI, HP-5ms, DB-5, Ultra-2, CP Sil 8 CB, SPB-5, Equity-5 BP-5, ZB-5, ZB-5ms, AT-5ms

SH-I-5MS Structure



ID	df	Temp. Range	10 m	15 m	20 m	25 m	30 m	50 m	60 m
0.10 mm	0.10 µm	-60 to 330/350 °C	227-36342-01	-	-	-	-	-	-
	0.18 µm		-	-	227-36015-01	-	-	-	-
0.18 mm	0.30 µm		-	-	227-36016-01	-	-	-	-
	0.36 µm		-	-	227-36017-01	-	-	-	-
0.20 mm	0.33 µm		-	-	-	227-36018-01	-	227-36018-02	-
0.25 mm	0.25 µm		-	221-75940-15	-	-	221-75940-30	-	227-36019-01
	0.40 µm		-	-	-	-	227-36020-01	-	-
	0.50 µm		-	227-36021-01	-	-	221-75941-30	-	221-75942-60
	1.00 µm		-	227-36022-01	-	-	227-36022-02	-	227-36022-03
0.32 mm	0.25 µm		-	227-36023-01	-	-	221-75943-30	-	227-36023-02
	0.50 µm		-	227-36024-01	-	-	221-75944-30	-	227-36024-02
	1.00 µm		-	227-36025-01	-	-	227-36025-02	-	227-36025-03
0.53 mm	0.25 µm		-	227-36026-01	-	-	227-36026-02	-	-
	0.50 µm		-	227-36027-01	-	-	227-36027-02	-	-
	1.00 µm		-	227-36028-01	-	-	227-36028-02	-	-
	1.50 µm		-	227-36029-01	-	-	227-36029-02	-	-

GC Multiresidue Pesticide



Peaks

1. Chloroneb
2. Pentachlorobenzene
3. alpha-BHC
4. Hexachlorobenzene
5. Pentachloroanisole
6. beta-BHC
7. gamma-BHC (Lindane)
8. delta-BHC
9. Endosulfan ether
10. Heptachlor
11. Pentachloroanisole
12. Aldrin
13. 4,4'-Dichlorobenzophenone
14. Fenson
15. Isodrin
16. Heptachlor epoxide (Isomer B)
17. Chlorbenside
18. trans-Chlordane
19. 2,4'-DDE
20. Endosulfan I
21. cis-Chlordane
22. trans-Nonachlor
23. Chlorfenson (Ovex)
24. 4,4'-DDE
25. Dieldrin
26. 2,4'-DDD
27. Endrin
28. Ethylan (Perthane)
29. Endosulfan II
30. 4,4'-DDD
31. 2,4'-DDT
32. cis-Nonachlor
33. Endrin aldehyde
34. 4,4'-Methoxychlor olefin
35. Endosulfan sulfate
36. 4,4'-DDT
37. 2,4'-Methoxychlor
38. Endrin ketone
39. Tetradifon
40. Mirex

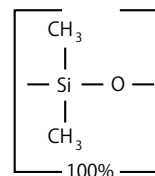
Conditions

Column: SH-I-5MS, 30 m, 0.25 mm ID, 0.25 µm (P/N: 221-75940-30)
 Inj. Vol.: 1 µL split (split ratio 50:1)
 Inj. Temp.: 250 °C
 Carrier Gas: He, constant flow rate 1.4 mL/min
 Oven Temp.: 90 °C (hold 1 min) to 330 °C at 8.5 °C/min (hold 5 min)
 Detector: MS-QP
 Transfer Line Temp: 290 °C
 Source Temp: 325 °C
 Solvent Delay Time: 5 min
 Ionization: EI

SH-I-1HT

- Non-polar phase: Crossbond 100% dimethyl polysiloxane
- 40% longer lifetime from specially designed fused silica tubing.
- Columns processed for high-temperature applications, such as high molecular weight hydrocarbons.
- Similar phases: Rxi-1HT, DB-1HT, AT-1ht, ZB-1HT inferno

■ SH-I-1HT Structure

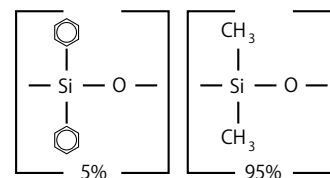


ID	df	Temp. Range	15 m	30 m
0.25 mm	0.10 µm	-60 to 400 °C	227-36087-01	227-36087-02
	0.25 µm		-	227-36088-01
0.32 mm	0.10 µm		227-36089-01	227-36089-02
	0.25 µm		-	227-36090-01

SH-I-5HT

- Low-polarity phase: Crossbond 5% diphenyl / 95% dimethyl polysiloxane
- 40% longer lifetime from specially designed fused silica tubing.
- Columns processed for high-temperature applications, such as mineral oil.
- Similar phases: Rxi-5HT, DB-5HT, VF-5HT, HT-5, ZB-5HT inferno

■ SH-I-5HT Structure



ID	df	Temp. Range	15 m	30 m
0.25 mm	0.10 µm	-60 to 400 °C	221-75933-15	227-36091-01
	0.25 µm		227-36092-01	221-75934-30
0.32 mm	0.10 µm		227-36093-01	227-36093-02
	0.25 µm		-	227-36094-01
0.53 mm	0.15 µm	-60 to 380/400 °C	-	227-36095-01

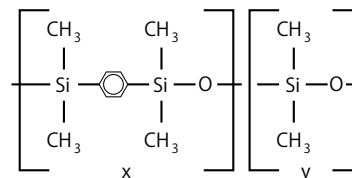
Capillary Columns

High-Performance Columns

SH-I-5Sil MS

- Low-polarity phase: Crossbond silarylene phase 1,4-bis(dimethylsiloxy) phenylene dimethyl polysiloxane
- Engineered to be a low-bleed GCMS column.
- Excellent inertness for active compounds.
- General-purpose columns—ideal for GCMS analysis of semi-volatiles, polycyclic aromatic compounds, chlorinated hydrocarbons, phthalates, phenols, amines, organochlorine pesticides, organophosphorus pesticides, drugs, solvent impurities, and hydrocarbons.
- Equivalent to USP G27, G36 phase
- Similar phases: Rxi-5Sil MS, DB-5ms UI, DB-5ms, VF-5ms, SLB-5ms, BPX-5, ZB-5ms, ZB-Semi-Volatiles, ZB-5MS plus

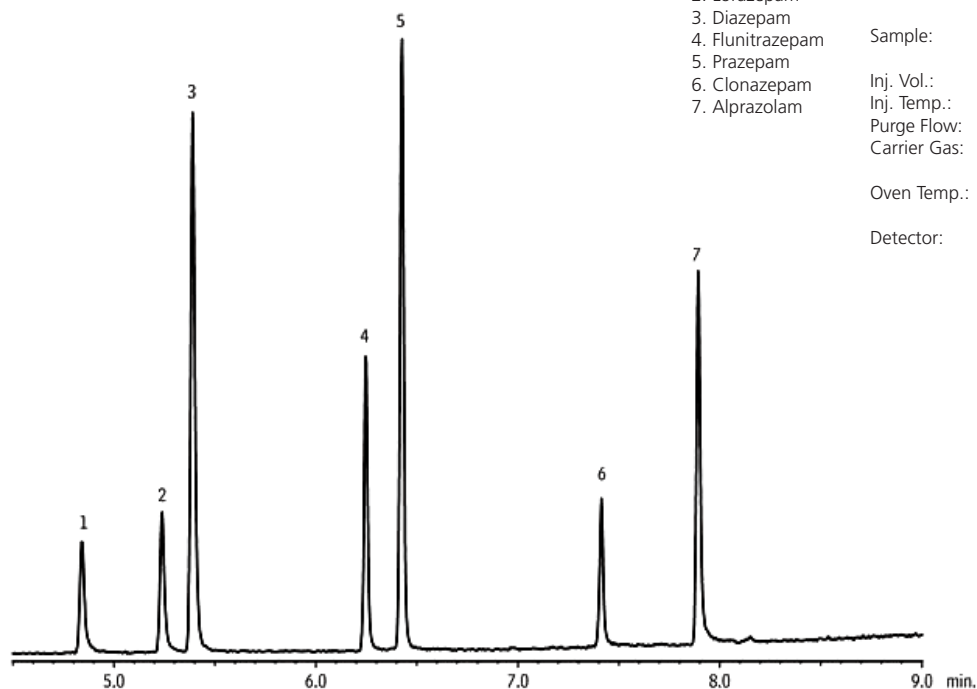
■ SH-I-5Sil MS Structure



For SH-I-5Sil MS columns with integrated Guard Column, please refer to page 52

ID	df	Temp. Range	10 m	15 m	20 m	30 m	40 m	60 m
0.10 mm	0.10 µm	-60 to 320/350 °C	227-36317-01	-	-	-	-	-
0.15 mm	0.15 µm		-	-	227-36030-01	-	-	-
	2.00 µm		-	-	227-36031-01	-	-	-
0.18 mm	0.10 µm		-	-	-	-	-	227-36032-01
	0.18 µm		-	-	227-36033-01	-	227-36033-02	-
	0.36 µm		-	-	227-36034-01	-	-	-
0.25 mm	0.10 µm		-	227-36035-01	-	227-36035-02	-	-
	0.25 µm		-	227-36036-01	-	221-75954-30	-	227-36036-02
	0.50 µm		-	227-36037-01	-	227-36037-02	-	-
	1.00 µm		-	227-36038-01	-	221-75956-30	-	227-36038-02
0.32 mm	0.25 µm		-	227-36039-01	-	227-36039-02	-	-
	0.50 µm		-	-	-	227-36040-01	-	-
	1.00 µm		-	-	-	227-36041-01	-	-
0.53 mm	1.50 µm		-	-	-	227-36032-02	-	-

Benzodiazepines



Peaks

1. Oxazepam
2. Lorazepam
3. Diazepam
4. Flunitrazepam
5. Prazepam
6. Clonazepam
7. Alprazolam

Conditions

Instrument: GCMS-QP2010
 Column: SH-I-5Sil MS, 30 m, 0.25 mm ID, 0.25 µm (P/N: 221-75954-30)
 Sample: Diluent: Butyl chloride
 Conc.: 15 µg/mL
 Inj. Vol.: 1 µL splitless (hold 1 min.)
 Inj. Temp.: 280 °C
 Purge Flow: 32.2 mL/min (20:1 split)
 Carrier Gas: He, constant linear velocity mode, 50 cm/sec.
 Oven Temp.: 200 °C to 330 °C at 15 °C/min (hold 3 min)
 Detector: MS-QP
 Transfer Line Temp: 280 °C
 Source Temp: 200 °C
 Solvent Delay Time: 4 min
 Tune: PFTBA
 Ionization: EI
 Scan Range: 50-350

SH-I-XLB

- Low-polarity proprietary phase
- General-purpose columns exhibiting extremely low bleed. Ideal for many GCMS applications, including pesticides, PCB congeners (e.g., Aroclor mixes), PAHs.
- Unique selectivity.
- Similar phases: Rxi-XLB, DB-XLB, VF-Xms, ZB-MR1, ZB-XLB

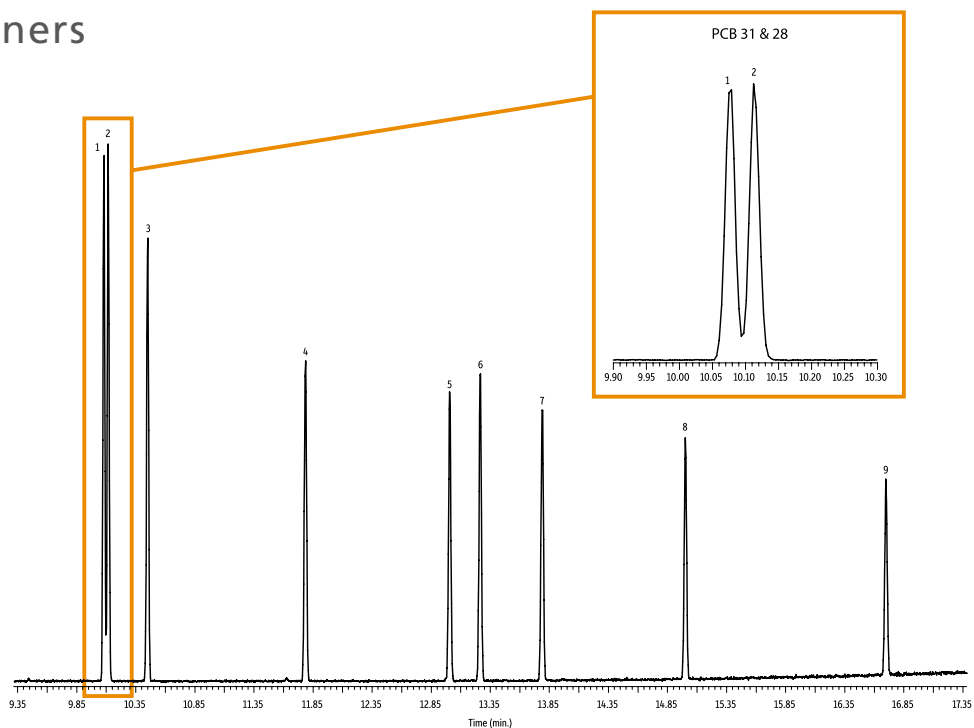
ID	df	Temp. Range	20 m	30 m	60 m	
0.18 mm	0.18 µm	30 to 340/360 °C	227-36309-01	-	-	
	0.10 µm		-	227-36042-01	-	
0.25 mm	0.25 µm		-	227-36043-01	227-36043-02	
	0.50 µm		-	227-36044-01	-	
	1.00 µm		-	227-36045-01	-	
0.32 mm	0.25 µm		-	227-36046-01	227-36046-02	
	0.50 µm		-	227-36047-01	-	
	1.00 µm		-	227-36048-01	-	
0.53 mm	0.50 µm		30 to 320/360 °C	-	227-36049-01	-
	1.50 µm			-	227-36050-01	-

* Maximum temperatures listed are for shorter length columns. Longer columns may have a different maximum temperature.

EU PCB Congeners

Peaks

1. PCB 31
2. PCB 28
3. PCB 52
4. PCB 101
5. PCB 118
6. PCB 153
7. PCB 138
8. PCB 180
9. PCB 194



Conditions

Column: SH-I-XLB, 30 m, 0.25 mm ID, 0.25 µm (P/N: 227-36043-01)
 Sample: PCB congener standard
 Diluent: Dichloromethane
 Conc.: 3.5 ppm
 Inj. Vol.: 0.5 µL splitless (hold 1.75 min.)
 Inj. Temp.: 300 °C
 Purge Flow: 50 mL

Carrier Gas: He, constant flow rate 1 mL/min
 Oven Temp.: 40 °C (hold 2 min) to 240 °C at 30 °C/min
 (hold 2 min) to 340 °C at 10 °C/min (hold 5 min)
 Detector: MS-QP
 Transfer Line Temp: 300 °C
 Source Temp: 280 °C
 Ionization: EI
 Scan Range: 45-550

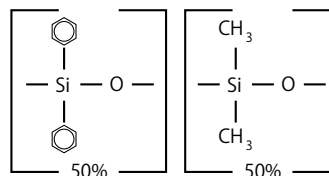
Capillary Columns

High-Performance Columns

SH-I-17

- Mid-polarity phase: Crossbond 50% diphenyl / 50% dimethyl polysiloxane
- General-purpose columns for pesticides, herbicides, rosin acids, phthalate esters, triglycerides, sterols.
- Equivalent to USP G3 phase.
- Similar phases: Rxi-17, HP-17, DB-17, DB-17HT, DB-608, SPB-17, ZB-50

■ SH-I-17 Structure

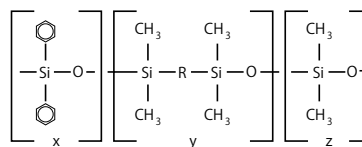


ID	df	Temp. Range	20 m	30 m
0.18 mm	0.18 μm	40 to 280/320 °C	227-36061-01	-
	0.25 μm		-	221-75907-30
0.25 mm	0.50 μm		-	227-36062-01
	1.00 μm		-	227-36063-01
0.32 mm	0.25 μm		-	227-36064-01
	0.50 μm		-	227-36065-01
	1.00 μm		-	227-36066-01
0.53 mm	0.25 μm		-	227-36067-01
	0.50 μm		-	227-36068-01
	0.83 μm		-	227-36069-01
	1.00 μm		-	221-76193-30
	1.50 μm		-	227-36070-01

SH-I-35SiI MS

- Mid-polarity: Crossbond phase (similar to 35% phenyl methyl polysiloxane)
- Very low-bleed phase for GCMS analysis.
- Special selectivity and excellent inertness for substituted polar compounds, such as drugs, pesticides, herbicides, PCBs, phenols, etc.
- Provides superior separation for cannabinoids.
- Equivalent to USP G42 phase.
- Similar phases: Rxi-35SiI MS, DB-35ms, DB-35ms UI, VF-35ms, BPX-35, BPX608, ZB-MR2

■ SH-I-35SiI MS Structure

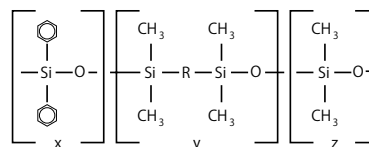


ID	df	Temp. Range	15 m	30 m
0.25 mm	0.25 μm	50 to 340/360 °C	227-36051-01	227-36051-02
	0.50 μm	50 to 340/360 °C	227-36052-01	227-36052-02
	1.00 μm	50 to 340/360 °C	227-36053-01	227-36053-02
0.32 mm	0.25 μm	50 to 340/360 °C	227-36054-01	227-36054-02
	0.50 μm	50 to 340/360 °C	227-36055-01	227-36055-02
	1.00 μm	50 to 340/360 °C	227-36056-01	227-36056-02
0.53 mm	0.50 μm	50 to 340/360 °C	227-36057-01	227-36057-02
	1.00 μm	50 to 320/340 °C	227-36058-01	227-36058-02
	1.50 μm	50 to 310/330 °C	227-36059-01	227-36059-02
	3.00 μm	50 to 280/300 °C	227-36060-01	227-36060-02

SH-I-17Sil MS

- Mid-polarity Crossbond phase (similar to 50% phenyl methyl polysiloxane)
- Low bleed for use with sensitive detectors, such as MS.
- Excellent inertness and selectivity for active environmental compounds, such as PAHs.
- Equivalent to USP G17 phase.
- Similar phases: Rxi-17Sil MS, DB-17ms, VF-17ms, BPX-50

■ SH-I-17Sil MS Structure



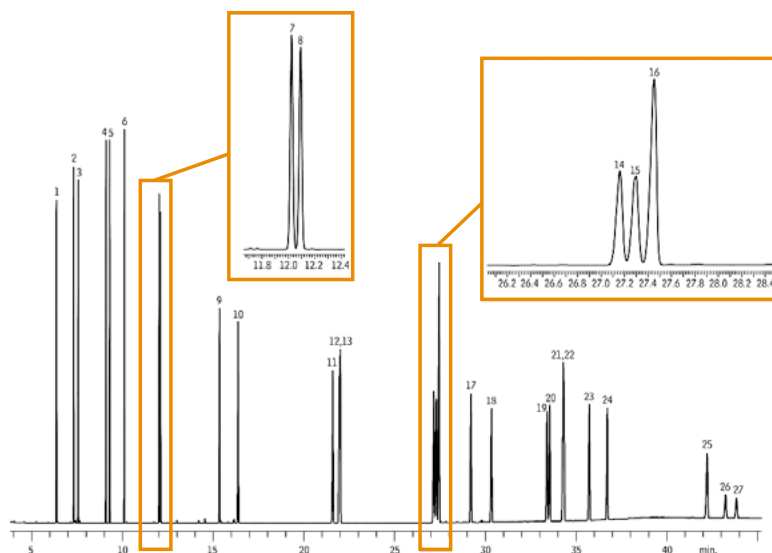
ID	df	Temp. Range	30 m	60 m
0.25 mm	0.25 μm	40 to 340/360 $^{\circ}\text{C}$	221-75916-30	227-36071-01
0.32 mm	0.25 μm		227-36072-01	-

* Maximum temperatures listed are for shorter length columns. Longer columns may have a different maximum temperature.

Polycyclic Aromatic Hydrocarbons (US EPA Method 8100)

Peaks

1. Naphthalene
2. 2-Methylnaphthalene
3. 1-Methylnaphthalene
4. Acenaphthylene
5. Acenaphthene
6. Fluorene
7. Phenanthrene
8. Anthracene
9. Fluoranthene
10. Pyrene
11. Benz[a]anthracene
12. Chrysene
13. Triphenylene
14. Benzo[b]fluoranthene
15. Benzo[k]fluoranthene
16. Benzo[j]fluoranthene
17. Benzo[a]pyrene
18. 3-Methylcholanthrene
19. Dibenz[a,h]acridine
20. Dibenz[a,j]acridine
21. Indeno[1,2,3-cd]pyrene
22. Dibenz[a,h]anthracene
23. Benzo[ghi]perylene
24. 7H-Dibenzo[c,g]carbazole
25. Dibenzo[a,e]pyrene
26. Dibenzo[a,i]pyrene
27. Dibenzo[a,h]pyrene



Conditions

Column SH-I-17Sil MS, 30 m, 0.25 mm ID, 0.25 μm
(P/N: 221-75916-30)
Inj. Vol.: 0.5 μL splitless (hold 1.75 min)
Inj. Temp.: 320 $^{\circ}\text{C}$
Purge Flow: 75 mL/min

Carrier Gas: He, constant flow rate 2.0 mL/min
Oven Temp.: 65 $^{\circ}\text{C}$ (hold 0.5 min) to 220 $^{\circ}\text{C}$ at 15 $^{\circ}\text{C}/\text{min}$
to 330 $^{\circ}\text{C}$ at 4 $^{\circ}\text{C}/\text{min}$ (hold 15 min)
Detector: FID, 320 $^{\circ}\text{C}$

SH-I-PAH

- Mid-polarity proprietary phase
- Ideal for EFSA PAH4 analysis—separates all priority compounds: benz[a]anthracene, chrysene, benzo[b] fluoranthene and benzo[a] pyrene.
- Best resolution of chrysene from interfering PAHs, triphenylene, and cyclopenta[cd]pyrene.
- Complete separation of benzo [b], [k], [j], and [a] fluoranthenes.
- Equivalent to USP G51 phase.
- Similar phases: Rxi-PAH

ID	df	Temp. Range	30 m	40 m	60 m
0.18 mm	0.07 μm	to 350/360 $^{\circ}\text{C}$	-	227-36073-01	-
0.25 mm	0.10 μm		227-36074-01	-	227-36074-02

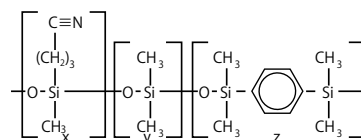
Capillary Columns

High-Performance Columns

SH-I-624Sil MS

- Mid-polarity Crossbond silarylene phase (similar to 6% cyanopropylphenyl / 94% dimethyl polysiloxane)
- Low-bleed, high-thermal stability column—maximum temperatures up to 300–320 °C.
- Inert—excellent peak shape for a wide range of compounds.
- Manufactured for column-to-column reproducibility—well-suited for validated methods.
- Equivalent to USP G13 phase.
- Similar phases: Rxi-624Sil MS, DB-624, VF-624ms, CP-Select 624 CB, BP-624

SH-I-624Sil MS Structure

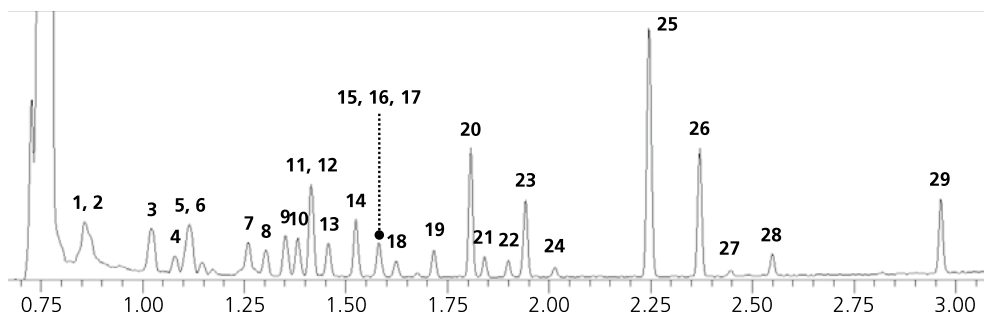


ID	df	Temp. Range	20 m	30 m	60 m	75 m	105 m
0.18 mm	1.00 µm	-20 to 300/320 °C	227-36075-01	-	-	-	-
0.25 mm	1.40 µm		-	221-75962-30	227-36076-01	-	-
0.32 mm	1.80 µm		-	227-36077-01	221-75963-60	-	-
0.53 mm	3.00 µm		-20 to 280/300 °C	-	227-36078-01	227-36078-02	227-36078-03

Ultra-Fast Analysis of Volatile Organic Compounds in Water

Peaks

- | | | | |
|--------------------------------|---------------------------|-------------------------------|--------------------------|
| 1. Vinyl chloride-d3 (ISTD) | 9. 1,1,1-trichloroethane | 17. 1,4-dioxane | 25. m-,p-xylene |
| 2. Vinyl chloride | 10. Carbon tetrachloride | 18. Bromodichloromethane | 26. o-xylene |
| 3. 1,1-dichloroethylene | 11. 1,2-dichloroethane | 19. Cis-1,3-dichloropropene | 27. Bromoform |
| 4. Dichloromethane | 12. Benzene | 20. Toluene | 28. 4-bromofluorobenzene |
| 5. Methyl-t-butyl ether (MTBE) | 13. Fluorobenzene (ISTD) | 21. Trans-1,3-dichloropropene | 29. 1,4-dichlorobenzene |
| 6. Trans-1,2-dichloroethylene | 14. Trichloroethylene | 22. 1,1,2-trichloroethane | |
| 7. Cis-1,2-dichloroethylene | 15. 1,4-dioxane-d8 (ISTD) | 23. Tetrachloroethylene | |
| 8. Trichloromethane | 16. 1,2-dichloropropane | 24. Dibromochloromethane | |



Conditions

Instrument: GCMS-TQ8030 + HS-20 Loop
 Column: SH-I-624Sil MS, 20 m, 0.18 mm ID, 1.00 µm
 (P/N: 227-36075-01)

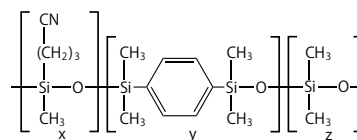
Headspace-Loop: Loop volume: 1 mL
 Sample Equilibration: 70 °C for 30 min
 Vial pressurization: 0.5 min, 50 kPa,
 equilibration 0.05 min
 Needle Flush: 2 min
 Sample Pathway Temp: 200 °C
 Transfer Line Temp: 200 °C

Inj.: Split (split ratio 30:1)
 Oven Temp.: 70 °C, 40 °C/min to 220 °C (hold 0.5 min)
 Carrier Gas: He, constant linear velocity mode, 50 cm/sec
 Detector: MS: SIM
 MS/MS: MRM
 Event (loop) time: 0.15 sec
 Source Temp: 200 °C
 Interface Temp: 230 °C

SH-I-1301Sil MS

- Mid-polarity Crossbond silarylene phase (similar to 6% cyanopropylphenyl / 94% dimethyl polysiloxane)
- Highest thermal stability in the industry ensures dependable, accurate MS results and increased uptime.
- Stabilized cyano phase selectivity improves the performance of existing methods. Ideal for solvents, glycols, and other polar compounds.
- Rigorous QC testing ensures inertness and accurate, reliable data for multiple compound classes.
- Equivalent to USP G43 phase.
- Similar phase: Rxi-1301Sil MS, VF-1301ms

■ SH-I-1301Sil MS Structure



ID	df	Temp. Range	15 m	30 m	60 m
0.25 mm	0.25 μm	-60 to 320 °C	-	227-36079-01	227-36079-02
	1.00 μm		-	227-36080-01	227-36080-02
0.32 mm	0.25 μm		-	227-36081-01	-
	1.00 μm		-	227-36082-01	227-36082-02
	1.50 μm		-	227-36083-01	227-36083-02
0.53 mm	1.00 μm		227-36084-01	227-36084-02	-
	1.50 μm	-	227-36085-01	-	
	3.00 μm	-60 to 280/320 °C	-	227-36086-01	227-36086-02



Guard columns for SH-I are also available. Please refer to page 50.

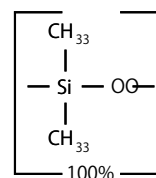
Capillary Columns

General-Purpose Columns

SH-1

- Non-polar phase: Crossbond 100% dimethyl polysiloxane
- General-purpose columns for solvent impurities, PCB congeners (e.g., Aroclor mixes), simulated distillation, arson accelerants, gases, natural gas odorants, sulfur compounds, essential oils, hydrocarbons, semi-volatiles, pesticides, oxygenates.
- Equivalent to USP G1, G2, G38 phases.
- Similar phases: Rtx-1, HP-1, DB-1, CP Sil 5 CB, SPB-1, BP-1, ZB-1, AT-1, EC-1

■ SH-1 Structure



For SH-1 columns with Integrated Guard column, please refer to page 52.

ID	df	Temp. Range	10 m	15 m	20 m	25 m	30 m	60 m	105 m
0.10 mm	0.40 μm	-60 to 330/350 °C	-	-	227-36330-01	-	-	-	-
	0.10 μm	-60 to 330/350 °C	-	221-75718-15	-	-	221-75718-30	227-36096-01	-
0.25 mm	0.25 μm	-60 to 330/350 °C	221-75719-10	227-36354-01	-	221-75719-25	221-75719-30	221-75719-60	-
	0.50 μm	-60 to 330/350 °C	-	-	-	-	227-36097-01	227-36097-02	-
	1.00 μm	-60 to 320/340 °C	-	-	-	-	227-36098-01	227-36098-02	221-75721-05
0.32 mm	0.10 μm	-60 to 330/350 °C	-	-	-	-	227-36099-01	227-36099-02	-
	0.25 μm	-60 to 330/350 °C	-	-	-	-	221-75723-30	221-75723-60	-
	0.50 μm	-60 to 330/350 °C	-	-	-	-	221-75724-30	227-36100-01	-
	1.00 μm	-60 to 320/340 °C	-	-	-	-	221-75725-30	221-75725-60	-
	1.50 μm	-60 to 310/330 °C	-	-	-	-	227-36101-01	227-36101-02	-
	3.00 μm	-60 to 280/300 °C	-	-	-	-	227-36102-01	227-36102-02	-
	4.00 μm	-60 to 280/300 °C	-	-	-	-	227-36103-01	-	-
0.53 mm	5.00 μm	-60 to 260/280 °C	-	-	-	-	221-75728-30	221-75728-60	-
	0.10 μm	-60 to 320/340 °C	-	-	-	-	227-36104-01	-	-
	0.25 μm	-60 to 320/340 °C	-	-	-	-	221-75729-30	227-36105-01	-
	0.50 μm	-60 to 310/330 °C	-	221-75730-15	-	-	221-75730-30	227-36106-01	-
	1.00 μm	-60 to 310/330 °C	-	221-75731-15	-	-	221-75731-30	221-75731-60	-
	1.50 μm	-60 to 310/330 °C	-	221-75732-15	-	-	221-75732-30	227-36107-01	-
	3.00 μm	-60 to 270/290 °C	-	-	-	-	221-75733-30	221-75733-60	-
	5.00 μm	-60 to 270/290 °C	-	-	-	-	221-75734-30	221-75734-60	-
	7.00 μm	-60 to 240/260 °C	-	-	-	-	227-36108-01	227-36108-02	-

* Maximum temperatures listed are for shorter length columns. Longer columns may have a different maximum temperature.

SH-1 PONA

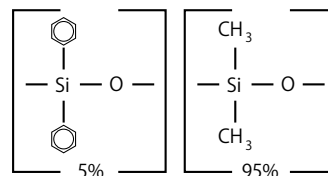
Compatible with ASTM and CGSB for hydrocarbon analysis.

ID	df	Temp. Range	100 m
0.25 mm	0.50 μm	-60 to 30/340 °C	221-76196-00

SH-5

- Low-polarity phase: Crossbond 5% diphenyl / 95% dimethyl polysiloxane
- General-purpose columns for drugs, solvent impurities, pesticides, hydrocarbons, PCB congeners (e.g., Aroclor mixes), essential oils, semi-volatiles.
- Equivalent to USP G27 and G36 phases.
- Similar phases: Rtx-5, HP-5, DB-5, CP Sil 8 CB, SPB-5, BP-5, ZB-5, AT-5, EC-5

■ SH-5 Structure



For SH-5 columns with Integrated Guard column, please refer to page 52.

ID	df	Temp. Range	15 m	25 m	30 m	60 m
0.25 mm	0.10 µm	-60 to 330/350 °C	221-75700-15	-	221-75700-30	227-36109-01
	0.25 µm	-60 to 330/350 °C	227-36313-01	-	221-75701-30	227-36110-01
	0.50 µm	-60 to 330/350 °C	-	221-76178-25	221-76178-30	227-36111-01
	1.00 µm	-60 to 320/340 °C	-	-	221-75702-30	227-36112-01
0.32 mm	0.10 µm	-60 to 330/350 °C	227-36312-01	-	227-36113-01	-
	0.25 µm	-60 to 330/350 °C	221-75703-15	-	221-75703-30	221-75703-60
	0.50 µm	-60 to 330/350 °C	-	-	221-75704-30	227-36114-01
	1.00 µm	-60 to 320/350 °C	-	-	221-75705-30	221-75705-60
	1.50 µm	-60 to 310/330 °C	-	-	221-76181-30	227-36115-01
	3.00 µm	-60 to 280/300 °C	-	-	227-36116-01	227-36116-02
0.53 mm	0.10 µm	-60 to 320/340 °C	-	-	227-36117-01	-
	0.25 µm	-60 to 320/340 °C	227-36314-01	-	221-75708-30	227-36118-01
	0.50 µm	-60 to 320/330 °C	-	-	221-75709-30	227-36119-01
	1.00 µm	-60 to 320/330 °C	221-75710-15	-	221-75710-30	221-75710-60
	1.50 µm	-60 to 310/330 °C	221-75711-15	-	221-75711-30	227-36120-01
	3.00 µm	-60 to 270/290 °C	-	-	221-75712-30	227-36121-01
	5.00 µm	-60 to 270/290 °C	-	-	221-75713-30	221-75713-60

* Maximum temperatures listed are for shorter length columns. Longer columns may have a different maximum temperature.

Metal columns are also available. Please refer to page 47.

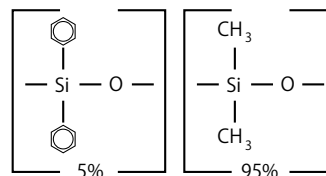
Capillary Columns

General-Purpose Columns

SH-5MS

- Low-polarity phase: Crossbond 5% diphenyl / 95% dimethyl polysiloxane
- Column specifically tested for low-bleed performance.
- General-purpose columns for drugs, solvent impurities, pesticides, hydrocarbons, PCB congeners (e.g., Aroclor mixes), essential oils, semi-volatiles.
- Equivalent to USP G27 and G36 phases.
- Similar phases: Rtx-5MS, HP-5, DB-5, CP Sil 8 CB, SPB-5, BP-5, ZB-5, AT-5, EC-5

■ SH-5MS Structure



For SH-5MS columns with Integrated Guard column, please refer to page 52.

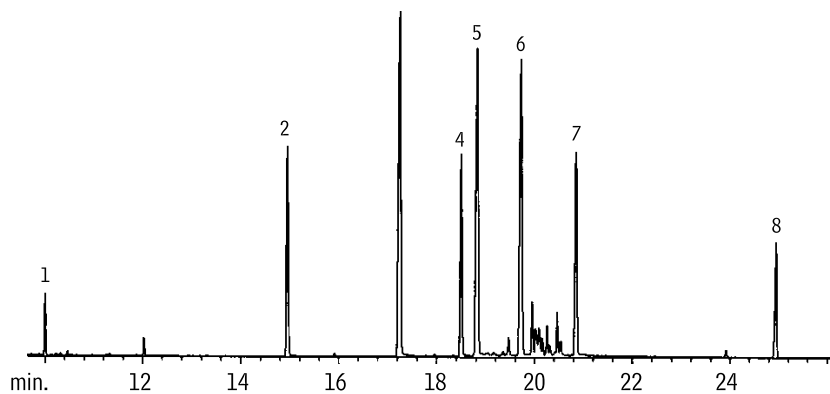
ID	df	Temp. Range	15 m	30 m	60 m
0.25 mm	0.10 µm	-60 to 330/350 °C	221-75854-15	221-75854-30	227-36122-01
	0.25 µm	-60 to 330/350 °C	221-75855-15	221-75855-30	227-36123-01
	0.50 µm	-60 to 330/350 °C	-	227-36124-01	227-36124-02
	1.00 µm	-60 to 330/350 °C	-	221-75857-30	-
0.32 mm	0.10 µm	-60 to 330/350 °C	-	227-36125-01	227-36125-02
	0.25 µm	-60 to 330/350 °C	-	221-75858-30	221-75858-60
	0.50 µm	-60 to 330/350 °C	-	227-36126-01	227-36126-02
	1.00 µm	-60 to 325/350 °C	-	227-36127-01	-
0.53 mm	0.50 µm	-60 to 320/340 °C	-	221-76191-30	-
	1.00 µm	-60 to 320/340 °C	-	227-36128-01	-
	1.50 µm	-60 to 310/330 °C	-	227-36129-01	-

* Maximum temperatures listed are for shorter length columns. Longer columns may have a different maximum temperature.

Endocrine Disruptors: Alkyl Phenols

Peaks

1. tert-butyl phenol
2. n-pentyl phenol
3. n-hexyl phenol
4. n-heptyl phenol
5. tert-octyl phenol
6. n-octyl phenol
7. n-nonyl phenol
8. bisphenol A



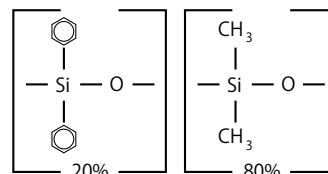
Conditions

Column: SH-5MS, 30 m, 0.25 mm ID, 0.25 µm (P/N: 221-75855-30).
 Conc.: 5–10 ng on-column
 Inj.: Splitless, purge on at 1 min
 Inj. Temp.: 275 °C
 Oven Temp.: 35 °C (hold 1 min) to 300 °C at 10 °C/min (hold 15 min)
 Carrier Gas: He
 Det. Temp.: 310 °C

SH-20

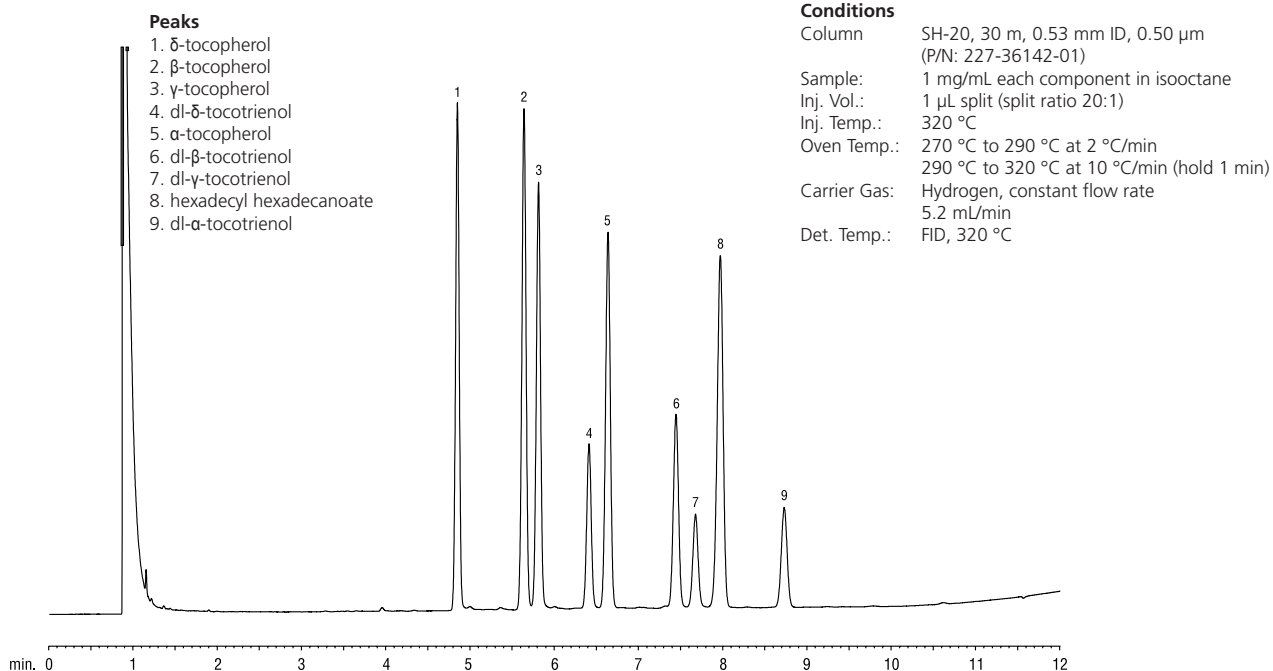
- Mid-polarity phase: Crossbond 20% diphenyl / 80% dimethyl polysiloxane
- General-purpose columns for volatile compounds, flavor compounds, alcoholic beverages.
- Equivalent to USP G28 and G32 phases.
- Similar phases: Rtx-20, SPB-20, AT-20, EC-20

SH-20 Structure



ID	df	Temp. Range	30 m	60 m
0.25 mm	0.10 µm	-20 to 300/320 °C	227-36130-01	227-36130-02
	0.25 µm	-20 to 300/320 °C	227-36131-01	227-36131-02
	0.50 µm	-20 to 290/310 °C	227-36132-01	227-36132-02
	1.00 µm	-20 to 280/300 °C	227-36133-01	227-36133-02
0.32 mm	0.10 µm	-20 to 300/320 °C	227-36134-01	227-36134-02
	0.25 µm	-20 to 300/320 °C	227-36135-01	227-36135-02
	0.50 µm	-20 to 290/310 °C	227-36136-01	227-36136-02
	1.00 µm	-20 to 280/300 °C	227-36137-01	227-36137-02
	1.50 µm	-20 to 270/290 °C	227-36138-01	227-36138-02
	3.00 µm	-20 to 250/270 °C	227-36139-01	227-36139-02
0.53 mm	0.10 µm	-20 to 260/280 °C	227-36140-01	227-36140-02
	0.25 µm	-20 to 260/280 °C	-	227-36141-01
	0.50 µm	-20 to 260/280 °C	227-36142-01	-
	1.00 µm	-20 to 260/280 °C	227-36143-01	227-36143-02
	1.50 µm	-20 to 250/270 °C	227-36144-01	-
	3.00 µm	-20 to 240/260 °C	227-36145-01	227-36145-02

Tocopherols and Tocotrienols



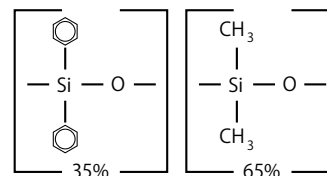
Capillary Columns

General-Purpose Columns

SH-35 / SH-35MS

- Mid-polarity phase: Crossbond 35% diphenyl / 65% dimethyl polysiloxane
- General-purpose columns for organochlorine pesticides, PCB congeners (e.g., Aroclor mixes), herbicides, pharmaceuticals, sterols, rosin acids, phthalate esters.
- Equivalent to USP G42 phase.
- Similar phases: Rtx-35, HP-35, DB-35, SPB-35, SPB-608, BPX-35, BPX608, ZB-35, AT-35, AT35ms

■ SH-35 / SH-35MS Structure



SH-35

ID	df	Temp. Range	30 m	60 m
0.25 mm	0.10 µm	40 to 320 °C	227-36146-01	227-36146-02
	0.25 µm	40 to 320 °C	227-36147-01	227-36147-02
	0.50 µm	40 to 310 °C	227-36148-01	227-36148-02
	1.00 µm	40 to 290 °C	227-36149-01	227-36149-02
0.32 mm	0.10 µm	40 to 320 °C	227-36150-01	227-36150-02
	0.25 µm	40 to 320 °C	227-36151-01	227-36151-02
	0.50 µm	40 to 310 °C	227-36152-01	227-36152-02
	1.00 µm	40 to 290 °C	227-36153-01	227-36153-02
	1.50 µm	40 to 270/290 °C	227-36154-01	-
	3.00 µm	40 to 250/270 °C	227-36155-01	227-36155-02
0.53 mm	0.10 µm	40 to 260/280 °C	-	227-36156-01
	0.25 µm	40 to 260/280 °C	-	227-36157-01
	0.50 µm	40 to 300 °C	227-36158-01	227-36158-02
	1.00 µm	40 to 290 °C	227-36159-01	227-36159-02
	1.50 µm	40 to 280 °C	227-36160-01	227-36160-02
	3.00 µm	40 to 240/260 °C	227-36161-01	227-36161-02

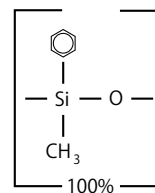
SH-35MS (Low-bleed phase for GCMS analysis)

ID	df	Temp. Range	30 m
0.25 mm	0.25 µm	40 to 320 °C	221-75835-30

SH-50

- Mid-polarity phase: Crossbond 100% methyl phenyl polysiloxane
- General-purpose columns for pesticides, herbicides, rosin acids, phthalate esters, sterols.
- Equivalent to USP G3 phase.
- Similar phases: Rtx-50, HP-50+, CP-Sil 24 CB, SPB-50, AT-50

■ SH-50 Structure

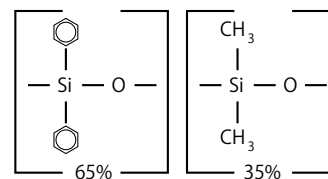


ID	df	Temp. Range	30 m	60 m
0.25 mm	0.25 μm	40 to 300/320 $^{\circ}\text{C}$	227-36162-01	227-36162-02
	0.50 μm	40 to 290/310 $^{\circ}\text{C}$	227-36163-01	227-36163-02
	1.00 μm	40 to 280/300 $^{\circ}\text{C}$	227-36164-01	227-36164-02
0.32 mm	0.25 μm	40 to 300/320 $^{\circ}\text{C}$	221-76182-30	227-36165-01
	0.50 μm	40 to 290/310 $^{\circ}\text{C}$	227-36166-01	227-36166-02
	1.00 μm	40 to 280/300 $^{\circ}\text{C}$	227-36167-01	227-36167-02
0.53 mm	0.50 μm	40 to 270/290 $^{\circ}\text{C}$	227-36168-01	227-36168-02
	0.83 μm	40 to 270/290 $^{\circ}\text{C}$	227-36169-01	-
	1.00 μm	40 to 260/280 $^{\circ}\text{C}$	227-36170-01	227-36170-02
	1.50 μm	40 to 250/270 $^{\circ}\text{C}$	227-36171-01	227-36171-02

SH-65

- Mid-polarity phase: Crossbond 65% diphenyl / 35% dimethyl polysiloxane
- General-purpose columns for phenols, fatty acids, triglycerides.

■ SH-65 Structure



ID	df	Temp. Range	30 m
0.25 mm	0.25 μm	50 to 300 $^{\circ}\text{C}$	227-36172-01
	0.50 μm	50 to 280/300 $^{\circ}\text{C}$	227-36173-01
	1.00 μm	50 to 260/280 $^{\circ}\text{C}$	227-36174-01
0.32 mm	0.25 μm	50 to 300 $^{\circ}\text{C}$	227-36175-01
	0.50 μm	50 to 280/300 $^{\circ}\text{C}$	227-36176-01
	1.00 μm	50 to 260/280 $^{\circ}\text{C}$	227-36177-01
0.53 mm	1.00 μm	50 to 250/270 $^{\circ}\text{C}$	227-36178-01

Capillary Columns

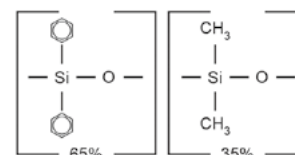
General-Purpose Columns

SH-65TG

- Application-specific columns, specially tested for triglycerides
- Similar phases: CP-TAP-CB

The SH-65TG phase resolves triglycerides by degree of unsaturation as well as by carbon number.

■ SH-65TG Structure

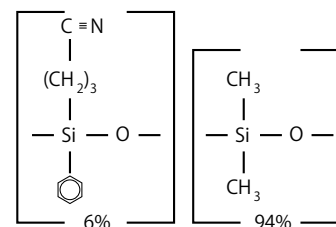


ID	df	Temp. Range	15 m	30 m
0.25 mm	0.10 μm	40 to 370 °C	227-36325-01	227-36325-02

SH-1301

- Mid-polarity phase: Crossbond 6% cyanopropylphenyl / 94% dimethyl polysiloxane
- General-purpose columns for residual solvents, alcohols, oxygenates, and volatile organic compounds.
- Equivalent to USP G43 phase.
- Similar phases: Rtx-1301, DB-1301, CP-1301, VF-1301ms, AT-1301

■ SH-1301 Structure



For SH-1301 columns with Integrated Guard column, please refer to page 52.

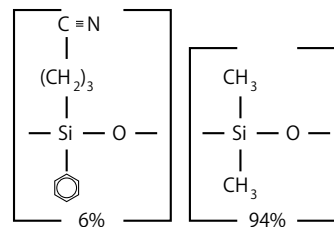
ID	df	Temp. Range	30 m	60 m
0.25 mm	0.25 μm	-20 to 280 °C	221-76194-30	221-76194-60
	0.50 μm	-20 to 270 °C	227-36203-01	-
	1.00 μm	-20 to 260 °C	227-36204-01	227-36204-02
	1.40 μm	-20 to 240 °C	-	227-36205-01
0.32 mm	0.25 μm	-20 to 280 °C	227-36206-01	227-36206-02
	0.50 μm	-20 to 270 °C	227-36207-01	227-36207-02
	1.00 μm	-20 to 260 °C	227-36208-01	227-36208-02
	1.50 μm	-20 to 250 °C	227-36209-01	227-36209-02
	1.80 μm	-20 to 240 °C	227-36210-01	227-36210-02
0.53 mm	0.25 μm	-20 to 280 °C	227-36211-01	-
	0.50 μm	-20 to 270 °C	227-36212-01	227-36212-02
	1.00 μm	-20 to 260 °C	227-36213-01	227-36213-02
	1.50 μm	-20 to 250 °C	227-36214-01	-
	3.00 μm	-20 to 240 °C	221-75776-30	221-75776-60

* Maximum temperatures listed are for shorter length columns. Longer columns may have a different maximum temperature.

SH-624

- Mid-polarity phase: Crossbond 6% cyanopropylphenyl / 94% dimethyl polysiloxane
- Application-specific columns for volatile organic pollutants. Recommended in U.S. EPA methods for volatile organic pollutants.
- Equivalent to USP G43 phase.
- Similar phases: Rtx-624, HP-624, DB-624, DB-624 UI, VF-624ms, SPB-624, BP-624, ZB-624, AT-624

■ SH-624 Structure



For SH-624 columns with Integrated Guard column, please refer to page 52.

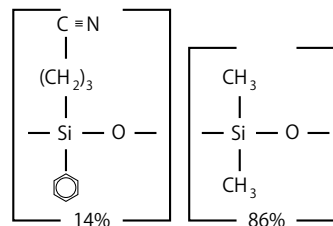
ID	df	Temp. Range	20 m	30 m	60 m	75 m
0.10 mm	0.50 μm	-20 to 240 °C	227-36332-01	-	-	-
0.18 mm	1.00 μm		227-36259-01	-	-	-
0.25 mm	1.40 μm		-	221-75863-30	227-36215-01	-
0.32 mm	1.80 μm		-	221-75864-30	221-75864-60	-
0.53 mm	3.00 μm		-	221-75865-30	221-75865-60	221-75865-75
			-	-	-	-

* Maximum temperatures listed are for shorter length columns. Longer columns may have a different maximum temperature.

SH-1701

- Mid-polarity phase: Crossbond 14% cyanopropylphenyl / 86% dimethyl polysiloxane
- General-purpose columns for alcohols, oxygenates, PCB congeners (e.g., Aroclor mixes), pesticides, and fragrance compounds.
- Equivalent to USP G46 phase.
- Similar phases: Rtx-1702, DB-1701P, DB-1701, CP Sil 19 CB, VF-1701ms, VF-1701 Pesticides, SPB-1701, BP-10, ZB-1701, ZB-1701P, AT-1701

SH-1701 Structure

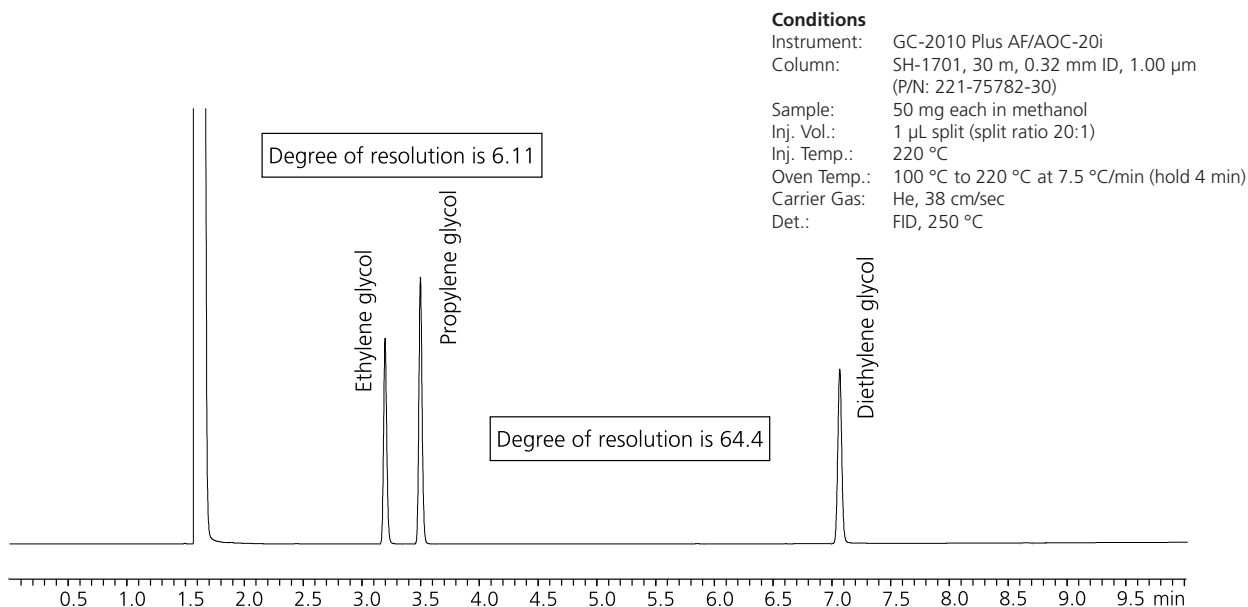


For SH-1701 columns with Integrated Guard column, please refer to page 52.

ID	df	Temp. Range	15 m	30 m	60 m
0.25 mm	0.10 μm	-20 to 280 °C	-	227-36216-01	227-36216-02
	0.25 μm	-20 to 280 °C	-	221-75777-30	227-36217-01
	0.50 μm	-20 to 270/280 °C	-	221-75778-30	227-36218-01
	1.00 μm	-20 to 260/280 °C	-	221-75779-30	227-36219-01
0.32 mm	0.10 μm	-20 to 280 °C	-	221-76184-30	227-36220-01
	0.25 μm	-20 to 280 °C	221-75780-15	221-75780-30	221-75780-60
	0.50 μm	-20 to 270/280 °C	-	221-75781-30	227-36221-01
	1.00 μm	-20 to 260/280 °C	-	221-75782-30	221-75782-60
	1.50 μm	-20 to 240/260 °C	-	227-36222-01	227-36222-02
0.53 mm	0.10 μm	-20 to 270/280 °C	-	227-36223-01	227-36223-02
	0.25 μm	-20 to 270/280 °C	-	227-36224-01	-
	0.50 μm	-20 to 260/270 °C	-	227-36225-01	-
	1.00 μm	-20 to 250/270 °C	-	221-75785-30	227-36226-01
	1.50 μm	-20 to 240/260 °C	-	227-36227-01	227-36227-02
	3.00 μm	-20 to 230/250 °C	-	227-36228-01	227-36228-02

* Maximum temperatures listed are for shorter length columns. Longer columns may have a different maximum temperature.

Analysis of Ethylene Glycol and Diethylene Glycol in Propylene Glycol



Conditions

Instrument: GC-2010 Plus AF/AOC-20i
 Column: SH-1701, 30 m, 0.32 mm ID, 1.00 μm (P/N: 221-75782-30)
 Sample: 50 mg each in methanol
 Inj. Vol.: 1 μL split (split ratio 20:1)
 Inj. Temp.: 220 °C
 Oven Temp.: 100 °C to 220 °C at 7.5 °C/min (hold 4 min)
 Carrier Gas: He, 38 cm/sec
 Det.: FID, 250 °C

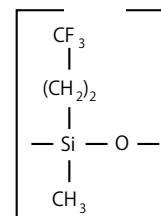
Capillary Columns

General-Purpose Columns

SH-200 / SH-200MS

- Mid-polarity phase: Crossbond trifluoropropyl methyl polysiloxane
- General-purpose columns for solvents, Freon® fluorocarbons, alcohols, ketones, silanes, glycols, and drugs of abuse.
- Equivalent to USP G6 phase.
- Similar phases: Rtx-200, DB-210, DB-200, VF-200ms, AT-200

■ SH-200 / SH-200MS Structure



SH-200

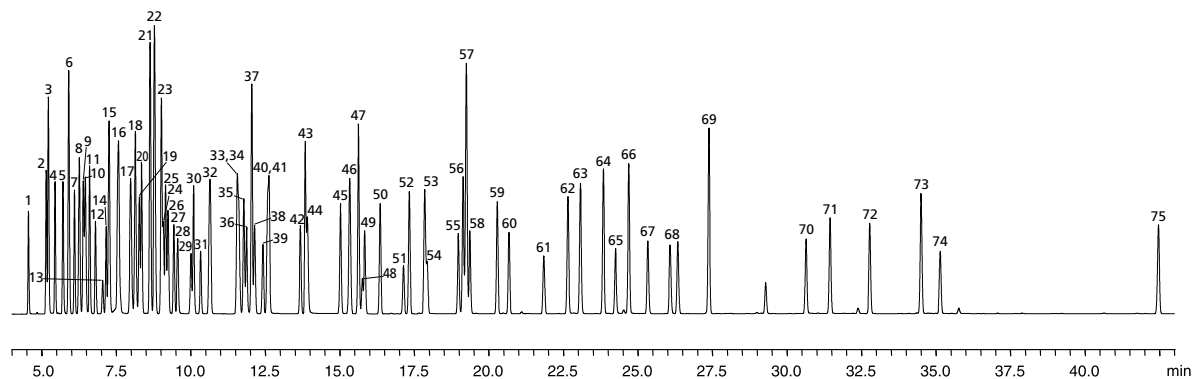
ID	df	Temp. Range	30 m	60 m	105 m
0.25 mm	0.10 μm	-20 to 320/340 °C	227-36179-01	-	-
	0.25 μm	-20 to 320/340 °C	227-36180-01	227-36180-02	-
	0.50 μm	-20 to 310/330 °C	227-36181-01	227-36181-02	-
	1.00 μm	-20 to 290/310 °C	221-75800-30	227-36182-01	-
0.32 mm	0.10 μm	-20 to 320/340 °C	227-36183-01	227-36183-02	-
	0.25 μm	-20 to 320/340 °C	227-36184-01	227-36184-02	-
	0.50 μm	-20 to 310/330 °C	227-36185-01	227-36185-02	-
	1.00 μm	-20 to 290/310 °C	227-36186-01	227-36186-02	-
	1.50 μm	-20 to 280/300 °C	227-36187-01	227-36187-02	221-75804-15
0.53 mm	0.10 μm	-20 to 310/330 °C	227-36188-01	227-36188-02	-
	0.25 μm	-20 to 310/330 °C	227-36189-01	227-36189-02	-
	0.50 μm	-20 to 300/320 °C	227-36190-01	227-36190-02	-
	1.00 μm	-20 to 290/310 °C	227-36191-01	227-36191-02	-
	1.50 μm	-20 to 280/300 °C	227-36192-01	227-36192-02	-
	3.00 μm	-20 to 260/280 °C	227-36193-01	227-36193-02	-

* Maximum temperatures listed are for shorter length columns. Longer columns may have a different maximum temperature.

SH-200MS (Low-bleed phase for GCMS analysis)

ID	df	Temp. Range	30 m
0.25 mm	0.10 μm	-20 to 320/340 °C	227-36194-01
	0.25 μm	-20 to 320/340 °C	221-75811-30
	0.50 μm	-20 to 310/330 °C	227-36195-01
	1.00 μm	-20 to 290/310 °C	227-36196-01
0.32 mm	0.10 μm	-20 to 320/340 °C	227-36197-01
	0.25 μm	-20 to 320/340 °C	221-75814-30
	0.50 μm	-20 to 310/330 °C	227-36198-01
0.53 mm	1.00 μm	-20 to 290/310 °C	227-36199-01
	0.50 μm	-20 to 300/320 °C	227-36200-01
	1.50 μm	-20 to 280/300 °C	227-36202-01

Analysis of Organic Solvents



Peaks

- | | | |
|--|---|---|
| 1. Methanol | 27. 1,2-Dimethoxyethane | 52. Methyl Butyl Ketone |
| 2. Ethanol | 28. Ethylene Glycol Monomethyl Ether | 53. Cyclohexanol |
| 3. Acetaldehyde + Ethyl Ether | 29. Ethylenechlorohydrin | 54. 1, 1,2,2-Tetrachloroethane |
| 4. 1,1-Dichloroethylene | 30. Methyl Ethyl Ketone | 55. Isoamyl Acetate |
| 5. Isopropanol | 31. Nitromethane | 56. Butyl Acrylate |
| 6. Dichloromethane + Hexane | 32. Propylene Glycol Monomethyl Ether + Isopropyl Acetate | 57. Ethylene Glycol Monobutyl Ether |
| 7. trans-1,2-Dichloroethylene | 33. Ethyl Acrylate | 58. Anisole + Propylene Glycol Monomethyl Ether Acetate |
| 8. tert.-Butanol | 34. Isoamyl Alcohol | 59. n-Amyl Acetate |
| 9. tert.-Butyl Methyl Ether | 35. Methyl Methacrylate | 60. Ethylene Glycol Monoethyl Ether Acetate |
| 10. Isopropyl Ether | 36. Ethylene Glycol Monoethyl Ether | 61. N,N-Dimethylformamide |
| 11. n-Propanol | 37. Toluene | 62. Isooctanol |
| 12. Ethyl Formate | 38. 1,4-Dioxane | 63. Cyclohexanone |
| 13. Chloroform | 39. tetrachloroethylene | 64. o-Dichlorobenzene |
| 14. Methyl Acetate | 40. n-Propyl Acetate | 65. Diethylene Glycol Monoethyl Ether |
| 15. Cyclohexane | 41. n-Amyl Alcohol | 66. Benzyl Alcohol |
| 16. Tetrachloromethane + sec.-Butanol | 42. Epichlorohydrin | 67. N,N-Dimethylacetamide |
| 17. Isooctane | 43. Pyridine | 68. Dimethyl Sulfoxide |
| 18. Isobutanol + 1,1,1-Trichloroethane | 44. Ethylene Glycol Monoisopropyl Ether | 69. Tetralin |
| 19. Acetonitrile | 45. Isobutyl Acetate | 70. Diethylene Glycol Monobutyl Ether |
| 20. Acrylonitrile | 46. Methyl Isobutyl Ketone + Ethylbenzene | 71. 2-Ethylhexyl Acrylate |
| 21. Benzene | 47. Chlorobenzene | 72. N-Methylpyrrolidone |
| 22. Tetrahydrofuran + methylcyclohexane | 48. p-Xylene | 73. Isophorone |
| 23. Methyl Acrylate + 1,2-Dichloroethane | 49. m-Xylene | 74. 1,3-Dimethyl-2-Imidazolidinone |
| 24. Trichloroethylene | 50. n-Butyl Acetate | 75. Sulfolane |
| 25. n-Butanol | 51. o-Xylene | |
| 26. Ethyl Acetate | | |

Conditions

Instrument: GC-2010
 Column: SH-200, 60 m, 0.32 mm ID, 1.00 µm (P/N: 227-36186-02)
 Inj.: Split (split ratio: 50:1)
 Inj. Temp.: 250 °C
 Oven Temp.: 40 °C (0 min) to 310 °C at 4 °C/min
 Carrier Gas: He, constant linear velocity mode, 25 cm/sec
 Detector: FID, 330 °C

For information on connection parts for capillary columns, please refer to page 53

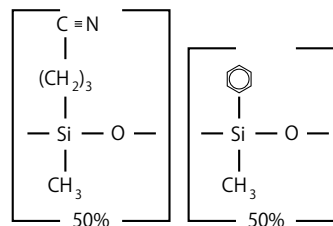
Capillary Columns

General-Purpose Columns

SH-225

- Polar phase: Crossbond 50% cyanopropylmethyl / 50% phenylmethyl polysiloxane
- General-purpose columns for FAMES, carbohydrates, sterols, flavor compounds.
- Equivalent to USP G7 and G19 phases.
- Similar phases: Rtx-225, DB-225, CP-Sil 43 CB, SPB-225, BP-225, AT-225

SH-225 Structure



ID	df	Temp. Range	30 m	60 m
0.25 mm	0.25 μm	40 to 220/240 $^{\circ}\text{C}$	227-36229-01	227-36229-02
	0.50 μm	40 to 220/240 $^{\circ}\text{C}$	227-36230-01	-
0.32 mm	0.10 μm	40 to 220/240 $^{\circ}\text{C}$	227-36231-01	-
	0.25 μm	40 to 220/240 $^{\circ}\text{C}$	227-36232-01	-
	0.50 μm	40 to 220/240 $^{\circ}\text{C}$	227-36233-01	-
	1.00 μm	40 to 200/220 $^{\circ}\text{C}$	227-36234-01	227-36234-02
0.53 mm	0.25 μm	40 to 200/220 $^{\circ}\text{C}$	227-36235-01	-
	0.50 μm	40 to 200/220 $^{\circ}\text{C}$	227-36236-01	-
	1.00 μm	40 to 200/220 $^{\circ}\text{C}$	227-36237-01	-

* Maximum temperatures listed are for shorter length columns. Longer columns may have a different maximum temperature.

SH-440

- General-purpose columns with unique selectivity for pesticides, PAHs, or other semivolatiles. Ideal for low/trace-level analyses.
- Low-bleed, high-resolution columns with unique selectivity.
- Similar phases: Rtx-440

ID	df	Temp. Range	30 m
0.25 mm	0.25 μm	20 to 320/340 $^{\circ}\text{C}$	227-36340-01

SH-502.2

- Application-specific columns with unique selectivity for volatile organic pollutants. The SH-502.2 column is cited in U.S. EPA Method 502.2 and in many gasoline range organics (GRO) methods for monitoring underground storage tanks.
- Excellent separation of trihalomethanes; ideal polarity for light hydrocarbons and aromatics.
- Similar phase: Rtx-502.2, DB-502.2

The SH-502.2 column will enable you to quantify all compounds listed in U.S. EPA methods 502.2 or 524.2, whether you use a mass spectrometer or a PID in tandem with an ELCD. The diphenyl/dimethyl polysiloxane based SH-502.2 stationary phase provides low bleed and thermal stability to 270 $^{\circ}\text{C}$. A 105-meter column can separate the light gases specified in EPA methods without subambient cooling. Narrow bore columns can interface directly in GC/MS systems.

ID	df	Temp. Range	30 m	60 m	105 m
0.25 mm	1.40 μm	-20 to 250/270 $^{\circ}\text{C}$	-	227-36341-03	-
0.32 mm	1.80 μm		227-36341-01	-	227-36341-02

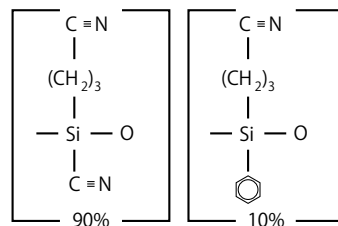
Capillary Columns

General-Purpose Columns

SH-2330

- Highly polar phase: Crossbond 90% biscyanopropyl / 10% cyanopropylphenyl polysiloxane (Non-bonded)
- General-purpose columns for cis/trans FAMES, dioxin isomers.
- Equivalent to USP G5, G8 and G48 phase.
- Similar phases: Rtx-2330, VF-23ms, SP-2330, SP-2331, SP-2380, BPX-70, AT-Silar90

SH-2330 Structure



ID	df	Temp. Range	30 m	60 m
0.25 mm	0.10 μm	0 to 260/275 °C	227-36238-01	227-36238-02
	0.20 μm		227-36239-01	227-36239-02
0.32 mm	0.10 μm		227-36240-01	227-36240-02
	0.20 μm		227-36241-01	227-36241-02
0.53 mm	0.10 μm		-	227-36242-01
	0.20 μm		227-36243-01	227-36243-02

* Maximum temperatures listed are for shorter length columns. Longer columns may have a different maximum temperature.

SH-2560

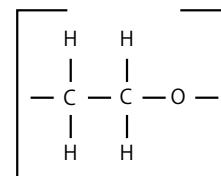
- Highly polar phase; biscyanopropyl polysiloxane—not bonded
- Stationary phase selectivity optimized for isomer separation to ensure accurate quantification of critical cis/trans FAMES.
- Application-specific QC test guarantees consistent, reliable performance for AOAC 996.06 and AOCS Ce 1j-07 methods.
- Excellent sample capacity; no peak distortion means easy, accurate peak integration.
- Equivalent to USP G5 phase.
- Similar phases: Rtx-2560, HP-88, CP Sil 88, SBP-2560

ID	df	Temp. Range	105 m
0.25 mm	0.20 μm	0 to 250 °C	227-36311-01

SH-WAX

- Polar phase: Crossbond™ polyethylene glycol
- Best polyethylene glycol (PEG) phase for alkenols, glycols, and aldehydes.
- Equivalent to USP G14, G15, G16, G20, G39 phases.
- Similar phases: Rtx-Wax, DB-Wax, BP-20, ZB-Wax, AT-WAXms, EC-WAX

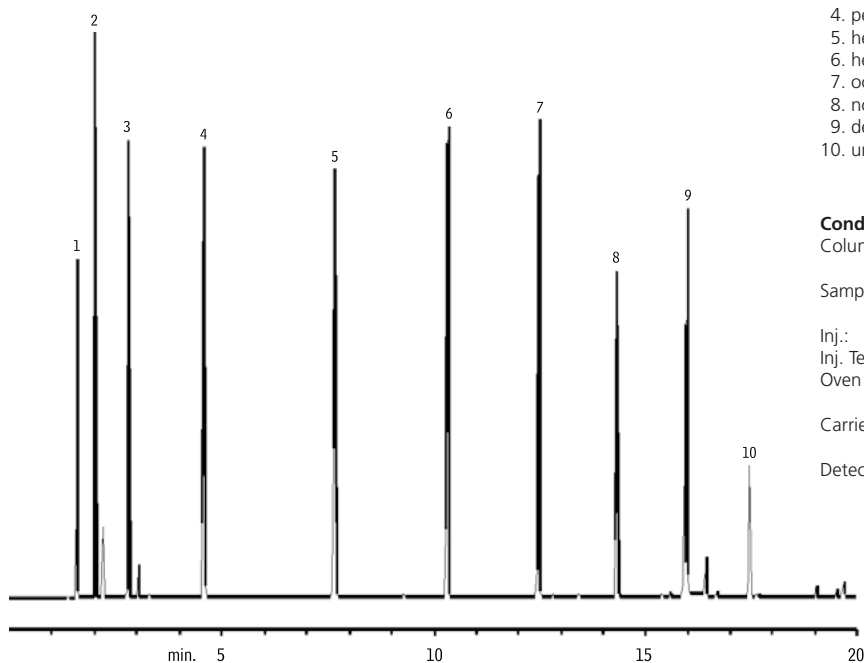
■ SH-Wax Structure



ID	df	Temp. Range	15 m	20 m	30 m	50 m	60 m
0.25 mm	0.10 µm	20 to 250 °C	-	-	221-76186-30	-	-
	0.25 µm	20 to 250 °C	-	-	221-75893-30	221-75893-50	221-75893-60
	0.50 µm	20 to 250 °C	-	-	221-75894-30	-	221-75894-60
0.32 mm	0.25 µm	20 to 250 °C	-	221-75895-20	221-75895-30	-	221-75895-60
	0.50 µm	20 to 250 °C	-	-	221-75896-30	221-75896-50	221-75896-60
	1.00 µm	20 to 240/250 °C	-	-	221-75897-30	-	221-75897-60
0.53 mm	0.25 µm	20 to 250 °C	-	-	227-36244-01	-	-
	0.50 µm	20 to 250 °C	-	-	221-76188-30	-	227-36245-01
	1.00 µm	20 to 240/250 °C	221-75899-15	-	221-75899-30	-	221-75899-60

* Maximum temperatures listed are for shorter length columns. Longer columns may have a different maximum temperature.

Aldehydes



Peaks

1. ethanal
2. propanal
3. butanal
4. pentanal
5. hexanal
6. heptanal
7. octanal
8. nonanal
9. decanal
10. undecanal

Conditions

Column: SH-Wax, 30 m, 0.25 mm ID, 0.50 µm (P/N: 221-75894-30)
 Samples: C2-C11 aldehydes mixture On-column conc.: 250 ng
 Inj.: Split (split ratio: 100:1)
 Inj. Temp.: 200 °C
 Oven Temp.: 40 °C (hold 5 min) to 200 °C at 10 °C/min
 Carrier Gas: Hydrogen, linear velocity 35 cm/sec. set at 40 °C
 Detector: FID, 200 °C

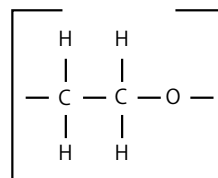
Capillary Columns

General-Purpose Columns

SH-PolarWax

- Polar phase: Crossbond polyethylene glycol
- Low-bleed PEG column ensures long column lifetimes.
- Rugged enough to withstand repeated water injections.
- Equivalent to USP G14, G15, G16, G20, and G39 phases.
- Similar phases: Stabilwax, HP-Innowax, CP-Wax 52 CB, VF-WAX MS, Supelco-wax-10, ZB-Wax Plus, AT-WAX, EC-WAX

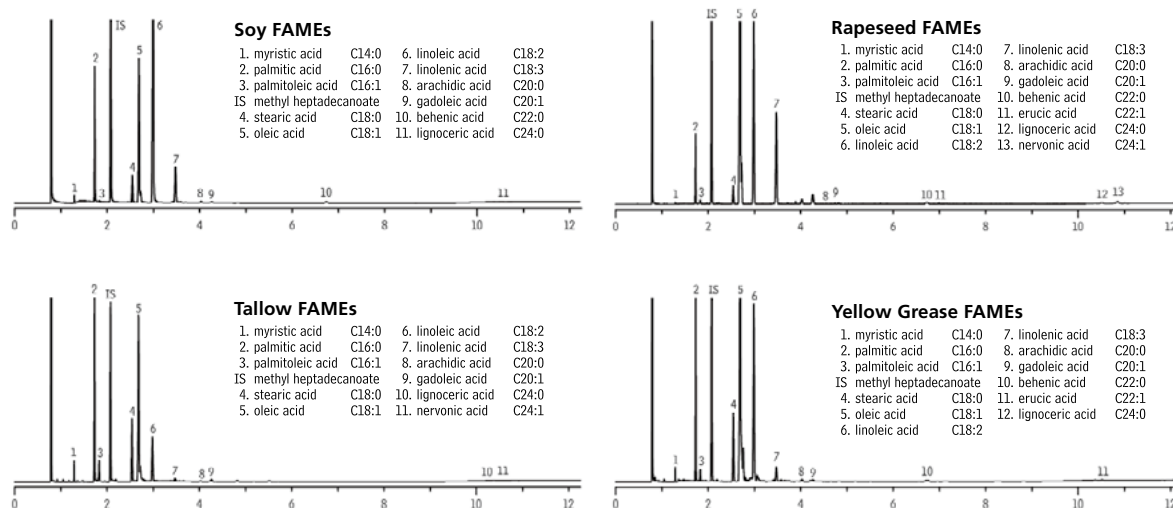
SH-PolarWax Structure



ID	df	Temp. Range	10 m	20 m	30 m	50 m	60 m
0.10 mm	0.10 µm	40 to 250/260 °C	227-36343-01	-	-	-	-
0.18 mm	0.18 µm	40 to 250 °C	-	227-36357-01	-	-	-
0.25 mm	0.10 µm	40 to 250/260 °C	-	-	227-36246-01	-	227-36246-02
	0.25 µm	40 to 250/260 °C	-	-	227-36305-02	227-36247-01	227-36247-02
	0.50 µm	40 to 250/260 °C	-	-	227-36248-01	-	227-36248-02
0.32 mm	0.10 µm	40 to 250 °C	-	-	227-36249-01	-	227-36249-02
	0.25 µm	40 to 250/260 °C	-	-	221-75972-30	-	227-36250-01
	0.50 µm	40 to 250/260 °C	-	-	227-36251-01	-	221-75975-60
	1.00 µm	40 to 240/260 °C	-	-	227-36252-01	-	227-36252-02
0.53 mm	0.10 µm	40 to 250 °C	-	-	227-36253-01	-	-
	0.25 µm	40 to 250/260 °C	-	-	227-36254-01	-	227-36254-02
	0.50 µm	40 to 250/260 °C	-	-	227-36255-01	-	227-36255-02
	1.00 µm	40 to 240/250 °C	-	-	221-75979-30	-	227-36256-01
	1.50 µm	40 to 230/240 °C	-	-	227-36257-01	-	227-36257-02
	2.00 µm	40 to 220/230 °C	-	-	227-36258-01	-	-

* Maximum temperatures listed are for shorter length columns. Longer columns may have a different maximum temperature.

FAMES in Biodiesel Oils



Conditions

Column: SH-PolarWax, 30 m, 0.32 mm ID, 0.25 µm (P/N: 221-75972-30)
 Inj.: 1 µL split (split ratio 100:1)
 Inj. Temp.: 250 °C
 Oven Temp.: 210 °C (hold 5 min) to 230 °C at 20 °C/min (hold 5 min)
 Carrier Gas: Hydrogen, constant flow rate 3mL/min, linear velocity 60 cm/sec.
 Detector: FID, 250 °C

Capillary Columns

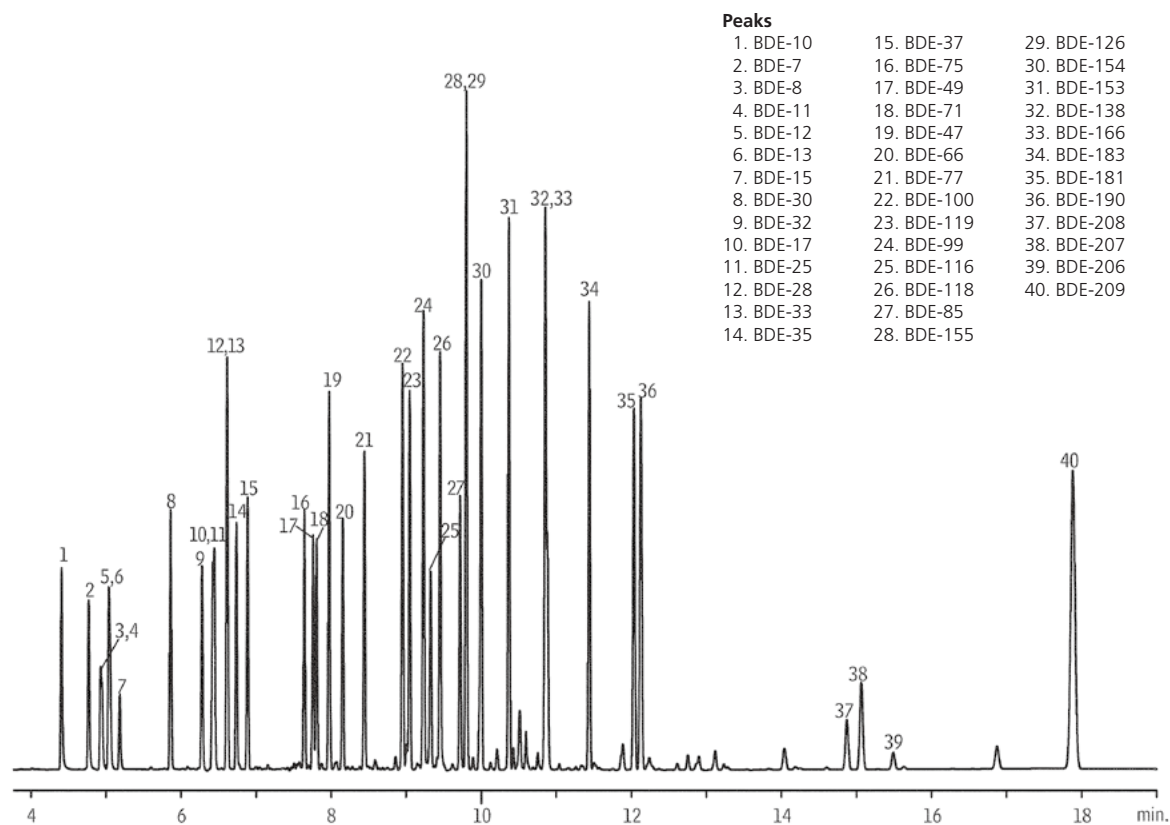
Dedicated Columns

SH-1614

- 5% diphenyl / 95% dimethyl polysiloxane
- Optimized for PBDE analysis by EPA Method 1614.
- Short column option resolves BDE-209 three times faster, with less thermal breakdown.
- Unique deactivation gives higher BDE-209 response than competitor columns, for greater analytical sensitivity.
- Exceeds EPA Method 1614 resolution criteria for BDE-49 and BDE-71.
- Similar phases: Rtx-1614

ID	df	Temp. Range	15 m	30 m
0.25 mm	0.10 µm	-60 to 330/360 °C	227-36265-01	227-36265-02

Brominated Flame Retardants



Conditions

Column: SH-1614, 15 m, 0.25 mm ID, 0.10 µm (P/N: 227-36265-01)
 Sample: 100-300 ppb PBDE PAR Solution 500 ppb decabromodiphenyl ether
 Inj.: 1 µL splitless (hold 1 min)
 Inj. Temp.: 340 °C
 Oven Temp.: 120 °C (hold 1 min) to 275 °C at 15 °C/min to 300 °C at 5 °C/min (hold 5 min)
 Carrier Gas: He, constant flow, linear velocity 60 cm/sec., 120 °C
 Detector: µ-ECD, 345 °C

Capillary Columns

Dedicated Columns

SH-OPP2

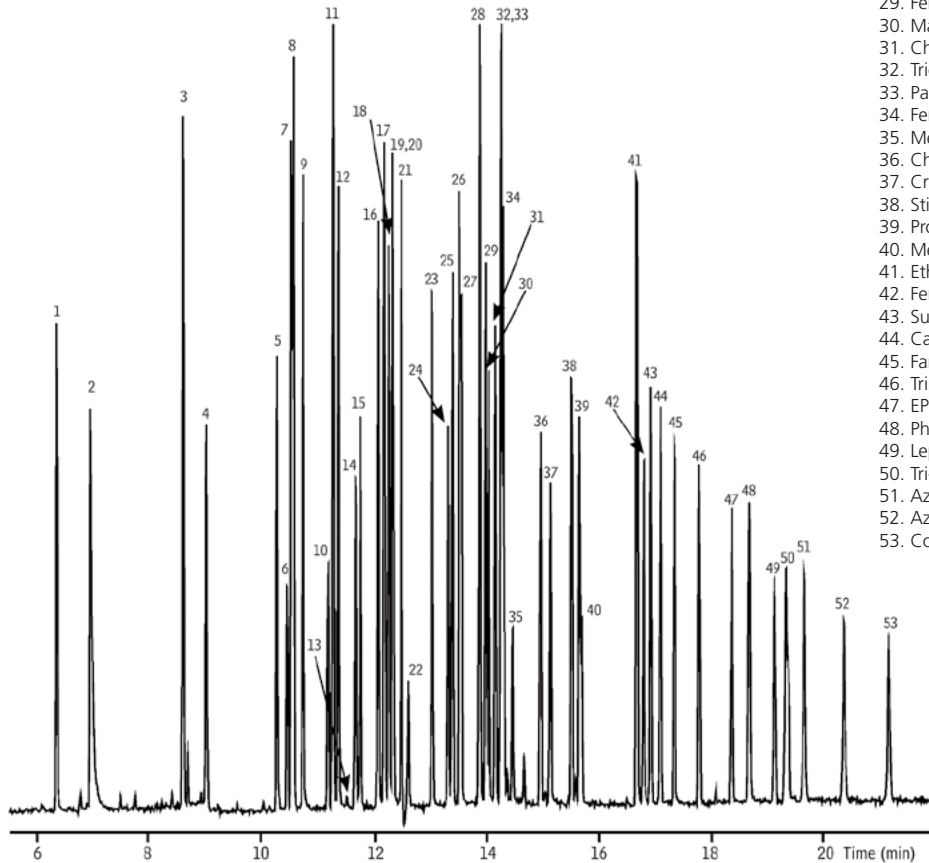
- Dedicated column for organophosphorus pesticides; best column combination for US EPA Method 8141.
- Low bleed - ideal for GC-FPD, GC-NPD, or GCMS analyses.
- Similar phases: Rtx-OPP2

ID	df	Temp. Range	30 m
0.32 mm	0.32 µm	-20 to 310/330 °C	221-75887-30

Organophosphorus Pesticides (U.S. EPA Method 8141A)

Peaks

- | | | | |
|----------------------------|-------------------|----------------|---|
| 1. Dichlorvos | 8. Thionazin | 15. Demeton-S | 22. Phosphamidon isomer (breakdown product) |
| 2. Hexamethylphosphoramide | 9. Ethoprop | 16. Terbufos | 23. Dichlorofenthion |
| 3. Mevinphos | 10. Naled | 17. Dimethoate | 24. Phosphamidon |
| 4. Trichlorfon | 11. Sulfotepp | 18. Diazinon | 25. Chlorpyrifos methyl |
| 5. TEPP | 12. Phorate | 19. Dioxathion | 26. Methyl parathion |
| 6. Demeton-O | 13. Dicrotophos | 20. Fonophos | 27. Ronnel |
| 7. Tributyl phosphate (SS) | 14. Monocrotophos | 21. Disulfoton | 28. Aspon |
| | | | 29. Fenitrothion |
| | | | 30. Malathion |
| | | | 31. Chlorpyrifos |
| | | | 32. Trichloronate |
| | | | 33. Parathion-ethyl |
| | | | 34. Fenthion |
| | | | 35. Merphos |
| | | | 36. Chlorfenvinphos |
| | | | 37. Crotoxyphos |
| | | | 38. Stirofos |
| | | | 39. Prothiofos |
| | | | 40. Merphos oxone (breakdown product) |
| | | | 41. Ethion |
| | | | 42. Fensulfothion |
| | | | 43. Sulprofos |
| | | | 44. Carbophenothion |
| | | | 45. Famphur |
| | | | 46. Triphenyl phosphate (SS) |
| | | | 47. EPN |
| | | | 48. Phosmet |
| | | | 49. Leptophos |
| | | | 50. Tri-o-cresyl phosphate |
| | | | 51. Azinphos-methyl |
| | | | 52. Azinphos-ethyl |
| | | | 53. Coumaphos |



Conditions

Column: SH-OPP2, 30 m, 0.32 mm ID, 0.32 µm (P/N: 221-75887-30)
 Inj.: 1 µL splitless (hold 1 min)
 Inj. Temp.: 200 °C
 Oven Temp.: 80 °C (hold 0.5 min) to 280 °C at 12 °C/min (hold 10 min)
 Carrier Gas: He.
 Dead Time: 1.03 min at 80 °C
 Detector: FPD, 250 °C
 Notes: Constant pressure

SH-CLP / SH-CLP II

- Dedicated columns for organochlorine pesticides and herbicides.
- Low bleed - ideal for high-sensitivity GC-ECD or GCMS analyses.
- Baseline separations in less than 10 minutes.
- Analyze EPA Method 8081B, 8082A, 8151A, 504.1, 515, 508.1, and 552.2 compounds without time-consuming column changes.
- Similar phases: Rtx-CLP, DB-CLP1 / DB-CLP2

SH-CLP

ID	df	Temp. Range	30 m
0.32 mm	0.32 μ m	-60 to 320/340 $^{\circ}$ C	227-36266-01
	0.50 μ m	-60 to 320/340 $^{\circ}$ C	221-75879-30

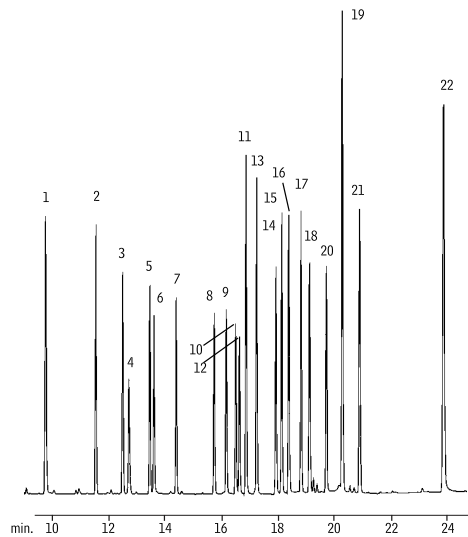
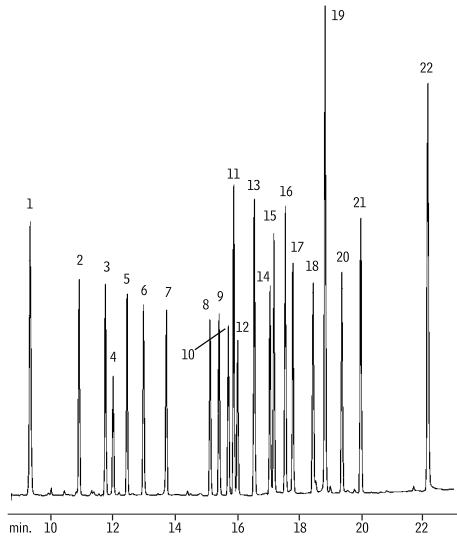
SH-CLP II

ID	df	Temp. Range	30 m
0.32 mm	0.25 μ m	-60 to 320/340 $^{\circ}$ C	227-36267-01

Organochlorine Pesticides (US EPA Method 8081)

Peaks

- | | | | |
|-----------------------------------|-----------------------------------|-------------------|------------------------|
| 1. 2,4,5,6-tetrachloro-m-xylene | 5. δ -BHC (δ -HCH) | 11. 4,4'-DDE | 17. 4,4'-DDT |
| 2. α -BHC (α -HCH) | 6. heptachlor | 12. endosulfan I | 18. endrin aldehyde |
| 3. γ -BHC (lindane) | 7. aldrin | 13. dieldrin | 19. methoxychlor |
| 4. β -BHC (β -HCH) | 8. heptachlor epoxide | 14. endrin | 20. endosulfan sulfate |
| | 9. γ -chlordane | 15. 4,4'-DDD | 21. endrin ketone |
| | 10. α -chlordane | 16. endosulfan II | 22. decachlorobiphenyl |



Conditions

Column: SH-CLP, 30 m, 0.32 mm ID, 0.50 μ m
(P/N: 221-75879-30)

Inj.: Direct

Inj. Temp.: 200 $^{\circ}$ C

Oven Temp.: 120 $^{\circ}$ C (hold 1 min) to 300 $^{\circ}$ C (hold 10 min) at 9 $^{\circ}$ C/min

Head pressure: 8.7 psi (constant)

Dead Time: 1.9 min

Detector: ECD, 300 $^{\circ}$ C with anode purge

Flow rate: 1.3 mL/min at 120 $^{\circ}$ C, He

Column: SH-CLP II, 30 m, 0.32 mm ID, 0.25 μ m
(P/N: 227-36267-01)

Capillary Columns

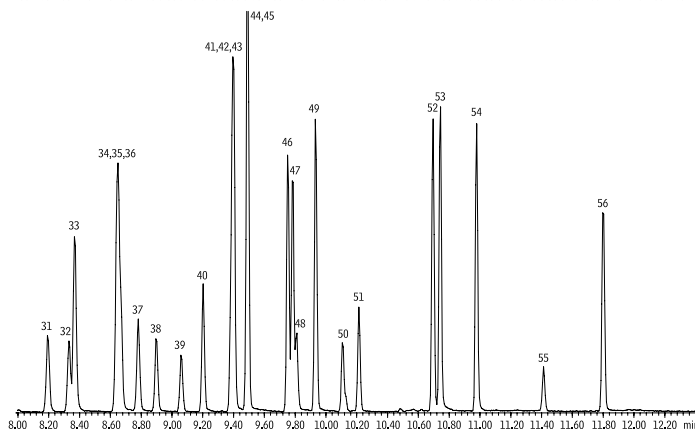
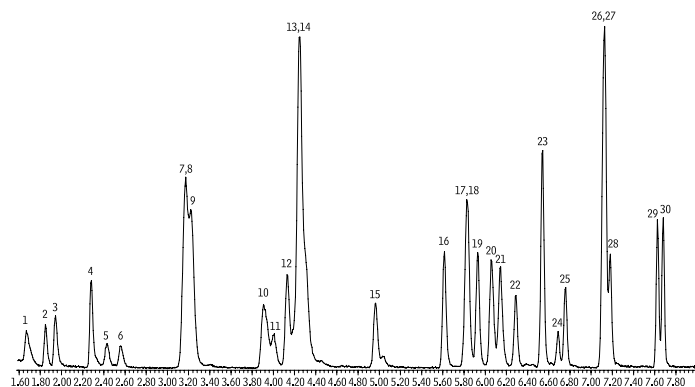
Dedicated Columns

SH-VMS

- Dedicated columns for analyzing volatile organic pollutants by GCMS including methods TO-15, TMS, and EPA 8260.
- Complete separation of U.S. EPA Method 8260 compounds in less than 10 minutes.
- Similar phases: Rtx-VMS

ID	df	Temp. Range	20 m	30 m	60 m
0.18 mm	1.00 µm	-40 to 240/260 °C	227-36412-01	-	-
0.25 mm	1.40 µm		-	227-36268-01	227-36268-02
0.32 mm	1.80 µm		-	227-36269-01	227-36269-02
0.45 mm	2.55 µm		-	-	227-36348-01
0.53 mm	3.00 µm		-	227-36353-01	-

Volatile Organics (US EPA CLP 04.1)



Peaks

- dichlorodifluoromethane
- chloromethane
- vinyl chloride
- bromomethane
- chloroethane
- trichlorofluoromethane
- 1,1-dichloroethene
- carbon disulfide
- 1,1,2-trichloro-1,2,2-trifluoroethane
- methylene chloride
- acetone
- trans-1,2-dichloroethene
- methyl acetate
- methyl tert-butyl ether
- 1,1-dichloroethane
- cis-1,2-dichloroethane
- cyclohexane
- bromochloromethane (IS)
- chloroform
- carbon tetrachloride
- 1,1,1-trichloroethane
- 2-butanone
- benzene
- 1,2-dichloroethane-d4 (SS)
- 1,2-dichloroethane
- methylcyclohexane
- trichloroethene
- 1,4-difluorobenzene (IS)
- 1,2-dichloropropane
- bromodichloromethane
- cis-1,3-dichloropropene
- toluene d8 (SS)
- toluene
- tetrachloroethane
- 4-methyl-2-pentanone
- trans-1,3-dichloropropane
- 1,1,2-trichloroethane
- dibromochloromethane
- 1,2-dibromoethane
- 2-hexanone
- chlorobenzene d5 (IS)
- chlorobenzene
- ethylbenzene
- m-xylene
- p-xylene
- o-xylene
- styrene
- bromoform
- isopropylbenzene
- 4-bromofluorobenzene (SS)
- 1,1,2,2-tetrachloroethane
- 1,3-dichlorobenzene
- 1,4-dichlorobenzene
- 1,2-dichlorobenzene
- 1,2-dibromo-3-chloropropane
- 1,2,4-trichlorobenzene

Conditions

Column: SH-VMS, 30 m, 0.25 mmID, 1.40 µm (P/N: 227-36268-01)

Purge and Trap: Trap: #10 (Tenax_q/silica gel/carbon molecular sieve)

Sample Temp: ambient

Purge: 11 min at 40 mL/min

Desorb preheat: 185 °C

Desorb: 0.5 min at 190 °C

Desorb flow rate: 35.0 mL/min

Bake: 8 min at 210 °C

Interface: split injector

Transfer Line Temp: 150 °C

Inj.: Split (split ratio: 35:1)

Inj. Temp.: 200 °C

Oven Temp.: 40 °C (hold 4 min) to 90 °C at 16 °C/min to 220 °C at 32 °C/min (hold 5 min)

Carrier Gas: He, linear velocity 34 cm/sec.,

40 °C, constant flow

Detector: MS

Transfer Line Temp: 150 °C

Scan Range: 35-300 amu.

Ionization: EI

SH-VRX

- Application-specific columns for volatile organic pollutants.
- Excellent for U.S. EPA Method 8021 compounds.
- Similar phases: Rtx-VRX

The SH-VRX stationary phase and optimized column dimensions provide low bleed, excellent resolution, and fast analysis times for volatile compounds.

ID	df	Temp. Range	25 m	30 m
0.10 mm	0.50 µm	-40 to 240/260 °C	227-36331-01	-
0.25 mm	1.40 µm		-	227-36355-01

SH-PCB

- Unique polymer for PCBs analysis by GC-ECD or GC-MS.
- Good results for other semivolatiles.
- Low polarity; inert to active compounds.
- Similar phases: Rtx-PCB

ID	df	Temp. Range	60 m
0.25 mm	0.25 µm	30 to 320/340 °C	227-36310-01

SH-Volatile Amine

- Unique selectivity for baseline resolution of all volatile amines.
- Excellent inertness assures accuracy and sensitivity for volatile amines, including free ammonia.
- Highly robust phase withstands repeated water injections, resulting in longer column lifetime.
- High temperature stability (290 °C) ensures elution of amines up to C16 and allows contaminants to be removed by "baking out" the column.
- Similar phase: Rtx-Volatile Amine, CP-Volamine

The SH-Volatile Amine column was designed specifically for analyzing volatile amines in difficult matrices, such as water. The unique base deactivation creates an exceptionally inert surface for these sensitive compounds, resulting in highly symmetrical peaks, which allow low detection limits. The stable bonded phase yields a column that is not only retentive and highly selective for these compounds but is also very robust and able to withstand repeated water injections.

ID	df	Temp. Range	30 m	60 m
0.32 mm	5.00 µm	-60 to 270/290 °C	227-36326-01	227-36326-02

Capillary Columns

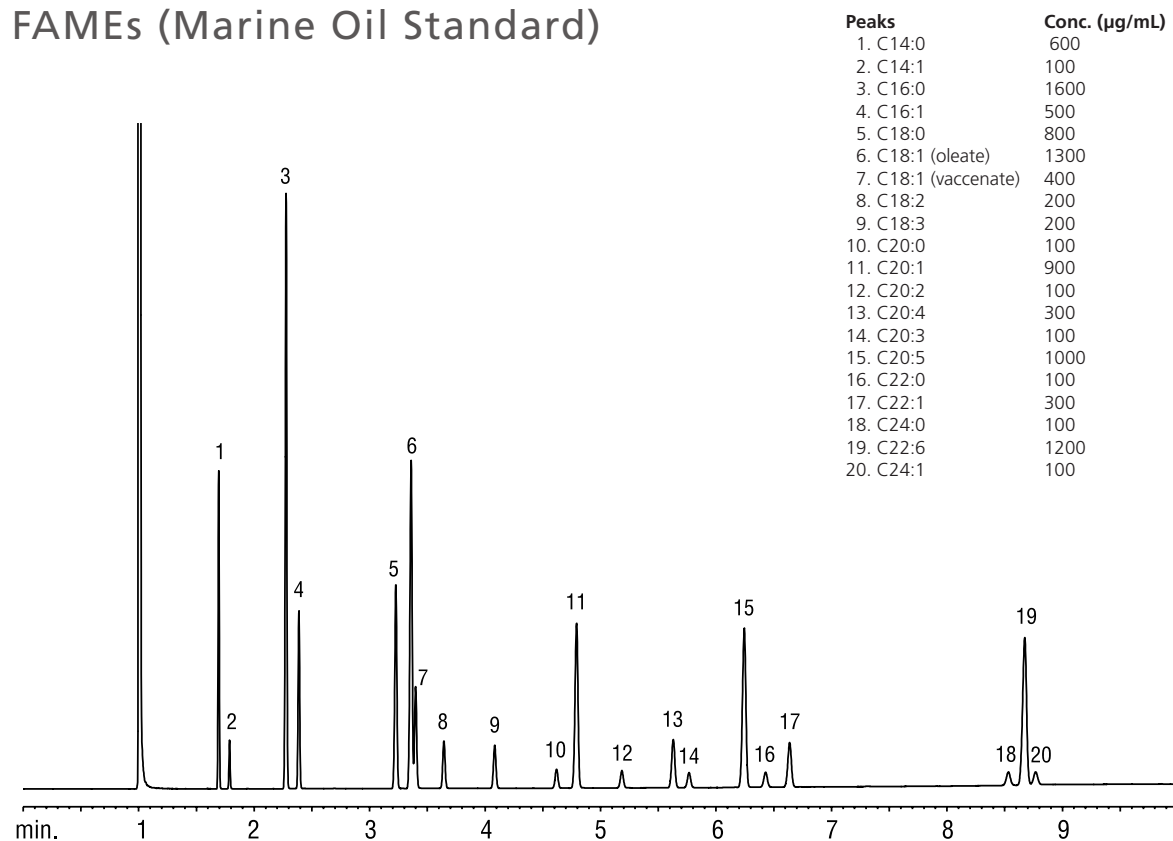
Dedicated Columns

SH-FAME

- Dedicated column for FAMES, specially tested with a FAME mixture.
- Equivalent to USP G16 phase.
- Similar phases: FameWax, Select FAME, Omegawax, ATAquaWax, AT-FAME

ID	df	Temp. Range	30 m
0.25 mm	0.25 µm	20 to 240/250 °C	227-36324-01
0.32 mm	0.25 µm		227-36270-01

FAMES (Marine Oil Standard)



Conditions

Column: SH-FAME, 30 m, 0.32 mm ID, 0.25 µm (P/N: 227-36270-01)
 Inj.: 1 µL split (split ratio: 100:1)
 Inj. Temp.: 250 °C
 Conc.: 10,000 µg/mL in isooctane (total FAMEOs)
 Carrier Gas: Hydrogen, constant flow rate 3 mL/min
 Oven Temp.: 195 - 240 °C at 5 °C/min (hold 1 min)
 Det. Temp.: 275 °C

SH-BAC Plus 1 / SH-BAC Plus 2

- Optimized column selectivities guarantee resolution of ethanol, internal standards, and frequently encountered interferences.
- Robust and reproducible column chemistry ensures longer column lifetime and consistent results.
- Similar phases: Rtx-BAC Plus 1, DB-ALC1, DB-ALC2, ZB-BAC-1, ZB-BAC-2

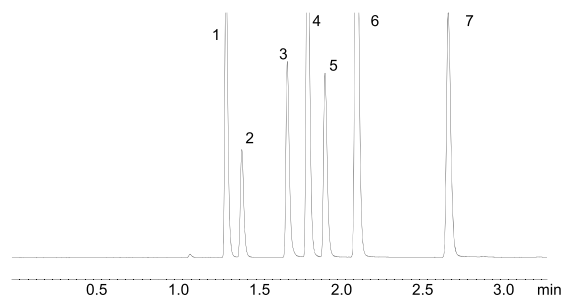
SH-BAC PLUS 1

ID	df	Temp. Range	30 m
0.32 mm	1.80 µm	-20 to 240/260 °C	227-36260-01
0.53 mm	3.00 µm		227-36261-01

SH-BAC Plus 2

ID	df	Temp. Range	30 m
0.32 mm	0.60 µm	-20 to 240/260 °C	227-36263-01
0.53 mm	1.00 µm		227-36264-01

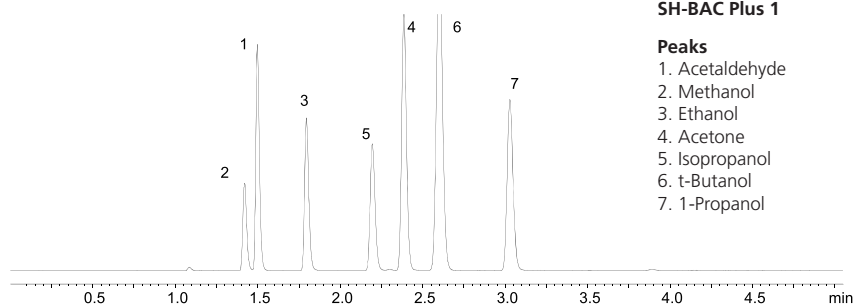
Analysis of Alcohol Compounds in Blood



SH-BAC Plus 2

Peaks

1. Acetaldehyde
2. Methanol
3. Ethanol
4. Acetone
5. Isopropanol
6. t-Butanol
7. 1-Propanol



SH-BAC Plus 1

Peaks

1. Acetaldehyde
2. Methanol
3. Ethanol
4. Acetone
5. Isopropanol
6. t-Butanol
7. 1-Propanol

Conditions

Instrument: GC-2010 Plus AF + HS-20
 Headspace: Oven Temp.: 85 °C
 Vial Warming Time: 15 min
 Vial Pressurization Time: 1 min
 Injection Time: 0.5 min
 Sample Line Temp: 150 °C
 Vial Volume: 20 mL
 Vial Agitation: Off
 Vial Pressurization: 100 kPa
 Load Time: 0.5 min
 Needle Flash Time: 0.5 min
 Transfer Line Temp: 150 °C

Conditions

Column: SH-BAC Plus 2, 30 m, 0.32 mm ID, 0.60 µm (P/N: 227-36263-01)
 SH-BAC Plus 1, 30 m, 0.32 mm ID, 1.80 µm (P/N: 227-36260-01)
 Inj.: Split (split ratio: 20:1)
 Col. Temp.: 40 °C
 Carrier Gas: He, 100 kPa
 Det.: FID, 250 °C
 Makeup Gas: He, 30 mL/min
 Hydrogen: 40 mL/min
 Air: 400 mL/min

Capillary Columns

Dedicated Columns

SH-5 Amine / SH-35 Amine

- Dedicated columns for amines and other basic compounds, including alkylamines, diamines, triamines, ethanolamines, and nitrogen-containing heterocyclics.
- Similar phases: Rtx-5 Amine

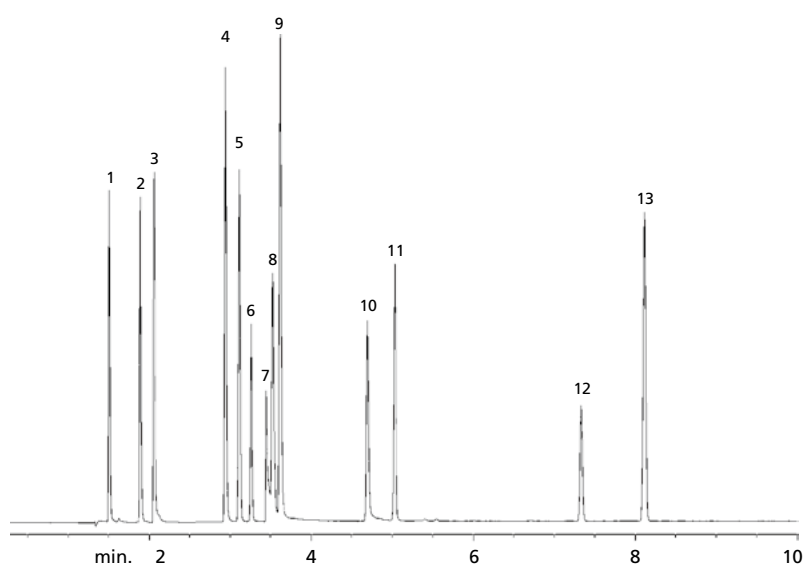
SH-5 Amine (Low-polarity phase: Crossbond 5% diphenyl / 95% dimethyl polysiloxane)

ID	df	Temp. Range	15 m	30 m
0.25 mm	0.25 µm	-60 to 315 °C	-	227-36282-01
	0.50 µm	-60 to 300/315 °C	227-36323-01	227-36283-01
	1.00 µm	-60 to 300/315 °C	227-36323-02	227-36284-01
0.32 mm	1.00 µm	-60 to 300/315 °C	-	227-36332-02
	1.50 µm	-60 to 290/305 °C	-	227-36285-01
0.53 mm	1.00 µm	-60 to 290/305 °C	-	227-36286-01
	3.00 µm	-60 to 280/295 °C	-	227-36287-01

SH-35 Amine (Mid-polarity phase: Crossbond 35% diphenyl / 65% dimethyl polysiloxane)

ID	df	Temp. Range	30 m
0.25 mm	0.50 µm	0 to 220 °C	227-36288-01
	1.00 µm		227-36289-01
0.32 mm	1.00 µm		227-36290-01
	1.50 µm		227-36291-01
0.53 mm	1.00 µm		227-36292-01
	3.00 µm		227-36293-01

Amines & Phenols



Peaks

1. diethylamine
2. pyridine
3. morpholine
4. phenol
5. aniline
6. 2-chlorophenol
7. diethylenetriamine
8. octylamine
9. 1-methyl-2-pyrrolidinone
10. 2-nitrophenol
11. 2,6-dimethylaniline
12. nicotine
13. 2-nitroaniline

Conditions

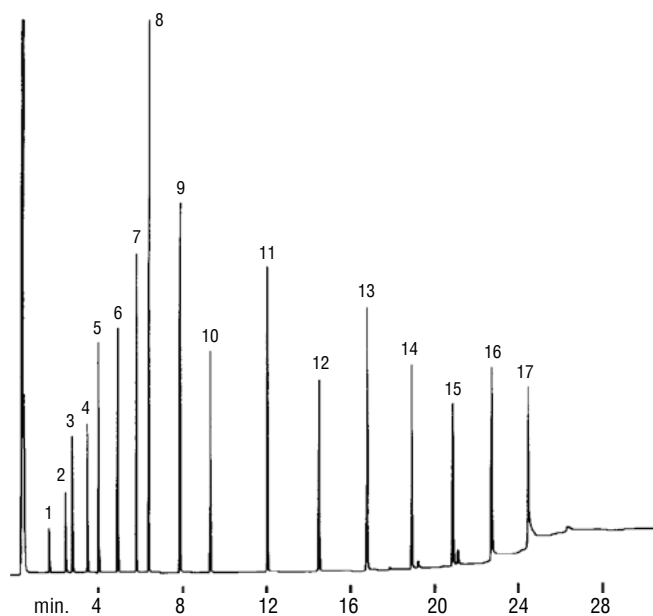
Column: SH-5 Amine, 30 m, 0.32 mm ID, 1.00 µm (P/N: 227-36290-01)
 Inj.: 1 µL split injection of miscellaneous amines and phenols in water (split ratio 25:1)
 On-col. conc.: 22 ng
 Inj. Temp.: 305 °C
 Carrier Gas: Hydrogen, linear velocity 38cm/sec. set at 120 °C
 Oven Temp.: 120 °C to 220 °C at 10 °C/min
 Det. Temp.: 305 °C
 FID sensitivity: 6.4 × 10⁻¹¹ AFS

SH-PolarD

- Polar phase: Crossbond acid-deactivated Carbowax polyethylene glycol
- Dedicated columns for free (underivatized) acids, some inorganic acids.
- Resistant to oxidative damage.
- Equivalent to USP G25 and G35 phases.
- Similar phases: Stabilwax-DA, HP-FFAP, DB-FFAP, VF-DA, CP-Wax 58 CB, CP-FFAP CB, Nukol, BP-21, ZB-FFAP, ATAquaWax-DA, AT-1000, EC-1000

ID	df	Temp. Range	30 m	50 m	60 m
0.25 mm	0.10 µm	40 to 250/260 °C	227-36271-01	-	-
	0.25 µm	40 to 250/260 °C	221-75981-30	-	227-36272-01
	0.50 µm	40 to 250/260 °C	227-36273-01	-	227-36273-02
0.32 mm	0.10 µm	40 to 250/260 °C	227-36274-01	-	-
	0.25 µm	40 to 250/260 °C	227-36321-02	-	227-36275-01
	0.50 µm	40 to 250/260 °C	227-36322-02	-	227-36276-01
	1.00 µm	40 to 240/250 °C	227-36277-01	227-36277-03	227-36277-02
0.53 mm	0.25 µm	40 to 250/260 °C	227-36278-01	-	227-36278-02
	0.50 µm	40 to 250/260 °C	227-36279-01	-	227-36279-02
	1.00 µm	40 to 240/250 °C	227-36280-01	-	227-36280-02
	1.50 µm	40 to 230/240 °C	227-36281-01	-	227-36281-02

Organic Acids (Free Fatty Acids)



Peaks

1. acetic acid
2. propionic acid
3. isobutyric acid
4. n-butyric acid
5. isovaleric acid
6. n-valeric acid
7. isocaproic acid
8. caproic acid
9. heptanoic acid
10. caprylic acid
11. capric acid
12. lauric acid
13. myristic acid
14. palmitic acid
15. stearic acid
16. arachidic acid
17. behenic acid

Conditions

Column: SH-PolarD, 30 m, 0.53 mm ID, 0.25 µm (P/N: 227-36278-01)
 Sample: free acid standard Conc.: 25 ng/µL.
 Inj.: 0.3 µL direct
 Inj. Temp.: 280 °C
 Carrier Gas: Hydrogen, flow rate 10 cc/min, linear velocity 80 cm/sec.
 Oven Temp.: 100 °C (hold 2 min) to 280 °C at 8 °C/min, (hold 10 min)
 Det.: FID, 280 °C

Capillary Columns

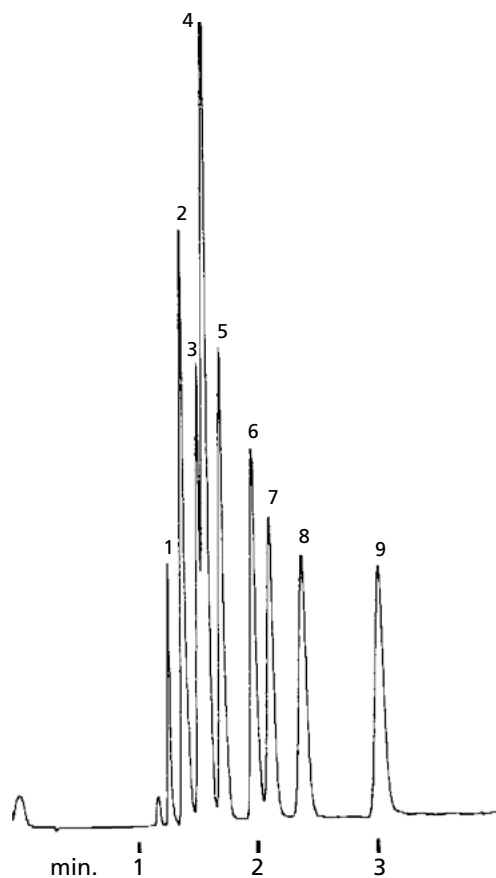
Dedicated Columns

SH-PolarX

- Polar phase: Crossbond base-deactivated Carbowax polyethylene glycol
- Dedicated columns for underivatized amines and other basic compounds, including alkylamines, diamines, triamines, nitrogen-containing heterocyclics. No need for column priming.
- Similar phases: Stabilwax-DB, CAM, CP-Wax 51 for Amines, Carbowax Amine, AT-CAM

ID	df	Temp. Range	15 m	30 m	60 m
0.25 mm	0.25 µm	40 to 210/220 °C	227-36359-01	227-36294-01	-
	0.50 µm		-	227-36295-01	-
0.32 mm	0.25 µm		-	227-36296-01	227-36296-02
	0.50 µm		-	227-36297-01	-
	1.00 µm		-	227-36298-01	227-36298-02
0.53 mm	0.50 µm		-	227-36299-01	-
	1.00 µm	-	227-36300-01	227-36300-02	

Amines (low MW)



Peaks

1. trimethylamine
2. dimethylamine
3. ethylamine
4. methylamine
5. isopropylamine
6. n-propylamine
7. tert-butylamine
8. diethylamine
9. sec-butylamine

Conditions

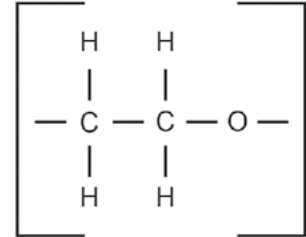
Column: SH-PolarX, 30 m, 0.53 mm ID, 1.00 µm (P/N: 227-36300-01)
 Inj.: 1 µL direct injection of amines in water
 Inj. Temp.: 250 °C
 Carrier Gas: Hydrogen, flow rate 5 cc/min, linear velocity 40 cm/sec.
 Oven Temp.: 45 °C
 Det.: FID, 250 °C

SH-PolarWAX MS

- High-polarity, stable polyethylene glycol (PEG) stationary phase.
- Low bleed and rugged enough to withstand repeated temperature cycles without retention time shifting.
- Ideal for food, flavor, fragrance, and industrial chemical and solvent analysis.
- Temperature range: 40 °C to 250/260 °C.
- Equivalent to USP G14, G15, G16, G20, and G39 phases.
- Similar Phases: Stabilwax, AT-WAXms

The SH-PolarWax MS column ensures reproducible retention times from run to run, even with temperature cycling. When methods require trace analysis, this highly polar, low-bleed stationary phase produces excellent signal-to-noise levels! Ideal for food and flavor analysis (e.g., essential oils), fragrance and allergen analysis, as well as industrial solvent and chemical analysis.

■ SH-PolarWAX MS Structure



ID	df	Temp. Range	30 m
0.25 mm	0.25 μm	40 to 250/260 °C	227-36322-01
0.32 mm	0.25 μm		227-36322-03

Capillary Columns

PLOT Columns

SH-Alumina BOND

- The reactivity of the aluminum oxide stationary phase is minimized to improve column response for polar unsaturates, such as dienes, and the column's sensitivity (or response) ensures linear and quantitative chromatographic analysis for these compounds.
- Highly selective for C1–C5 hydrocarbons
- Separate all saturated and unsaturated hydrocarbon isomers above ambient temperatures.

SH-Alumina BOND/Na₂SO₄

- Na₂SO₄ deactivation
- Acetylene and propadiene elute after butanes.
- Best separation for butene isomers (impurities in butene streams).
- Methyl acetylene elutes after 1,3-butadiene.
- Cyclopropane (impurity in propylene) elutes well before propylene.
- Similar phases: Rt-Alumina BOND/Na₂SO₄, GS-ALUMINA, CP-Al₂O₃/Na₂SO₄, Alumina sulfate PLOT, AT-Alumina

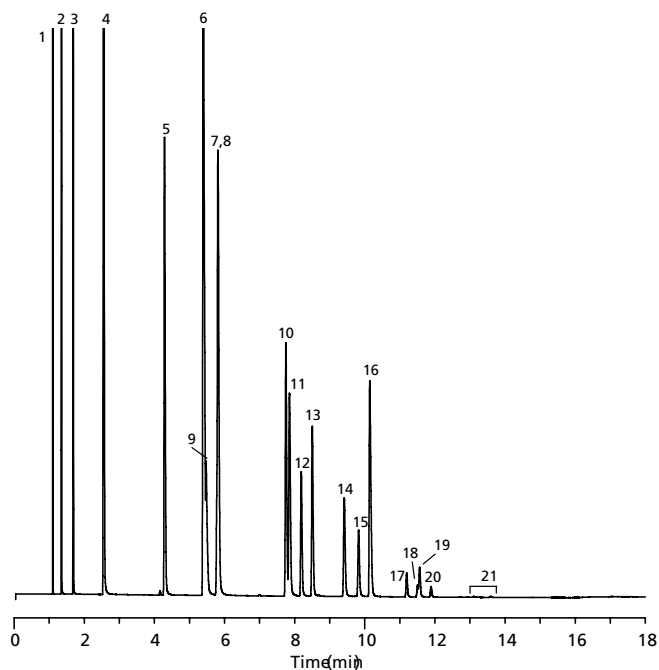
ID	df	Temp. Range	30 m	50 m
0.32 mm	5 μm	-60 to 200 °C	227-36328-01	-
0.53 mm	10 μm		227-36316-01	227-36301-01

SH-Alumina BOND/KCl

- KCl deactivation
- Lowest polarity alumina column in Shimadzu PLOT columns.
- Low moisture sensitivity reduces the need for frequent regeneration.
- Acetylene elutes before n-butane.
- Methyl acetylene (impurity in 1,3-butadiene) elutes before 1,3-butadiene.
- Similar phases: Rt-Alumina BOND/KCl, GS-Alumina KCl, HP-PLOT Al₂O₃ KCl, CP-Al₂O₃/KCl, Alumina chloride PLOT

ID	df	Temp. Range	50 m
0.53 mm	10 μm	-60 to 200 °C	221-76139-50

Refinery Gas



Peaks

- | | |
|--------------------|-----------------------|
| 1. methane | 12. isobutylene |
| 2. ethane | 13. cis-2-butene |
| 3. ethylene | 14. isopentane |
| 4. propane | 15. n-pentane |
| 5. propylene | 16. 1,3-butadiene |
| 6. isobutane | 17. trans-2-pentene |
| 7. n-butane | 18. 2-methyl-2-butene |
| 8. propadiene | 19. 1-pentene |
| 9. acetylene | 20. cis-2-pentene |
| 10. trans-2-butene | 21. hexanes |
| 11. 1-butene | |

Conditions

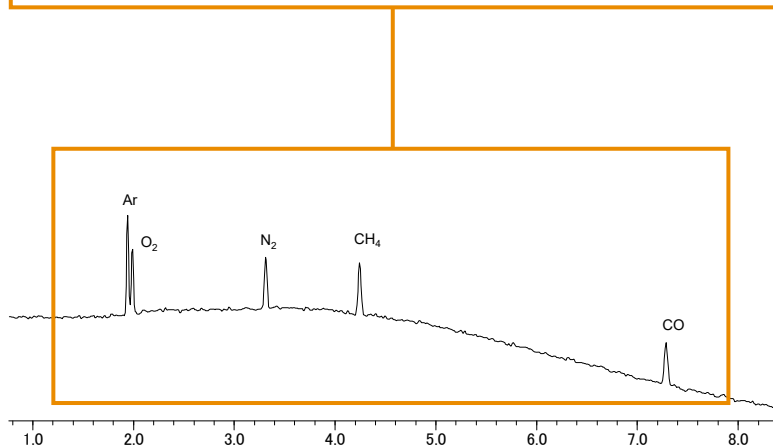
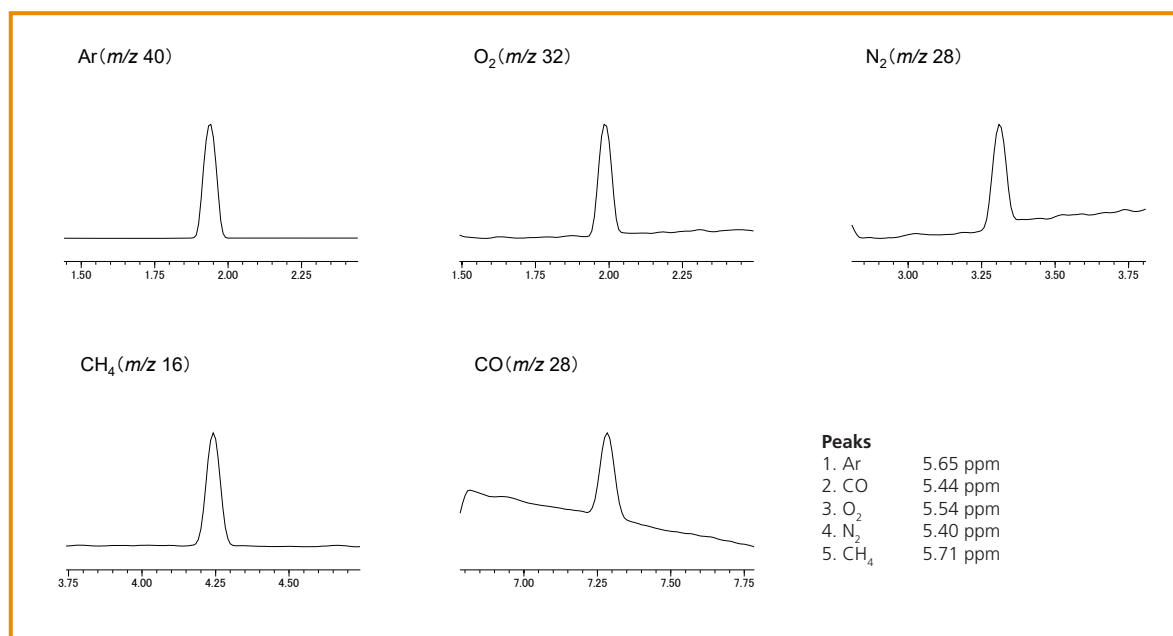
- Column: SH-Alumina BOND/KCl, 50 m, 0.53 mm ID, 10 μm (P/N: 221-76139-50)
- Sample: Refinery gas
- Inj.: 10 μL split (split vent flow 80mL/min)
- Inj. Temp.: 200 °C
- Carrier Gas: Hydrogen, constant pressure, 8.0 psi, linear velocity 74 cm/sec. at 45 °C
- Oven Temp.: 45 °C (hold 1 min) to 200 °C at 10 °C/min (hold 3.5 min)
- Det.: FID, 200 °C

SH-Msieve 5A

- Stationary phase: Molecular sieve 5A
- Easily separate permanent gases at temperatures above ambient.
- Improve accuracy with sharp, symmetrical peaks for argon, oxygen, and carbon monoxide.
- Similar phases: Rt-Msieve 5A, HP-PLOT Molesieve, CP-Molsieve 5A, Mol Sieve 5A PLOT, AT-Mole Sieve

ID	df	Temp. Range	30 m
0.32 mm	30 μ m	-100 to 300 $^{\circ}$ C	227-36611-02
0.53 mm	50 μ m		221-75763-30

Analysis of Inorganic Gas



Conditions

Instrument: GCMS-QP2010 Ultra
 Column: SH-Msieve 5A, 30 m, 0.32 mm ID, 30 μ m (P/N: 227-36611-02)
 Sample Inj.: Gas sampler (1 mL loop volume)
 Inj. Mode: Split (split ratio: 50:1)
 Inj. Temp.: 200 $^{\circ}$ C
 Control Mode: Pressure (100 kPa)
 Carrier Gas: Helium
 Oven Temp.: 35 $^{\circ}$ C (hold 2 min) to 150 $^{\circ}$ C at 10 $^{\circ}$ C/min (hold 5 min)
 Det.: MS
 Interface Temp: 200 $^{\circ}$ C
 Ion Source Temp: 200 $^{\circ}$ C
 Measurement Mode: Scan (m/z 10 to 100)
 Event Time: 0.5 sec
 Ionization Method: EI
 Emission Current: 150 μ A

Capillary Columns

PLOT Columns

SH-Q-BOND

- Non-polar PLOT column incorporating 100% divinylbenzene.
- Excellent for analysis of C₁ to C₃ hydrocarbons as well as isomers and alkanes up to C₁₂.
- High retention for CO₂ simplifies gas analysis; CO₂ and methane separated from O₂/N₂/CO. (Note: O₂/N₂/CO not separated at ambient temperature.)
- Use for analysis of oxygenated compounds and solvents.
- Similar phases: Rt-Q-Bond, HP-PLOT Q, CP-PoraPLOT Q, CP-PoraBOND Q, Supel-Q PLOT, AT-Q

ID	df	Temp. Range	30 m
0.32 mm	10 µm	-60 to 280/300 °C	221-75764-30
0.53 mm	20 µm		221-75765-30

SH-QS-BOND

- Intermediate polarity porous polymer PLOT column incorporating low 4-vinylpyridine.
- Separates ethane, ethylene, and acetylene to baseline.
- Similar phases: Rt-QS-Bond, GS-Q

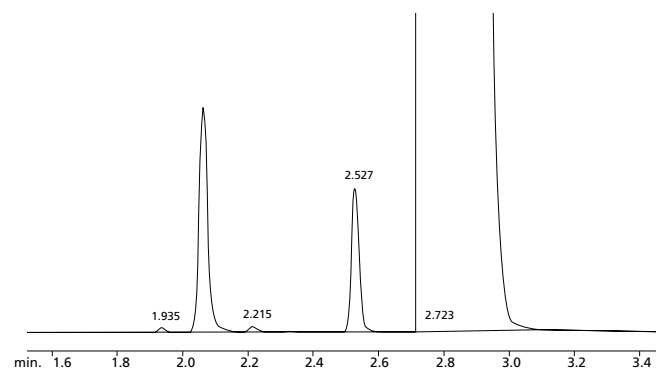
ID	df	Temp. Range	30 m
0.53 mm	20 µm	-60 to 250 °C	227-36366-01

SH-U-BOND

- Polar PLOT column, incorporating divinylbenzene ethylene glycol / dimethylacrylate.
- Highest polarity porous polymer column in Shimadzu PLOT columns.
- Highly inert for the analysis of polar and nonpolar compounds.
- Ideal for trace H₂S, COS, and mercaptans in hydrocarbon streams.
- Similar phases: Rt-U-Bond, HP-PLOT U, CP-PoraPLOT U, CP-PoraBOND U

ID	df	Temp. Range	30 m
0.32 mm	10 µm	-60 to 190 °C	227-36327-01
0.53 mm	20 µm		227-36302-01

Water and Ethanol in Acetone



Peaks	Re. Time
Methane	1.935
Water	2.063
Methanol	2.215
Ethanol	2.527
Acetone	2.723

Conditions

Column: SH-Q-BOND, 30 m, 0.53 mm ID, 20 µm (P/N: 221-75765-30)
Sample: 0.5% water and ethanol in acetone
Inj.: 3 µL split (split ratio 11:1)
Inj. Temp.: 250 °C
Carrier Gas: He, constant flow, linear velocity 28.7 cm/sec. @ 200 °C
Oven Temp.: 200 °C, isothermal
Det.: TCD, 260 °C

Trap columns for adhering dislodged particles from PLOT columns are also available. Please refer to page 50.

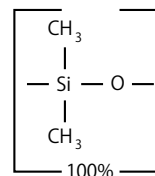
Capillary Columns

Metal Columns

SH-MetalX-1

- Non-polar phase: Crossbond 100% dimethyl polysiloxane
- General-purpose columns for solvent impurities, PCB congeners (e.g., Aroclor mixes), gases, natural gas odorants, sulfur compounds, essential oils, hydrocarbons, semivolatiles, pesticides, and oxygenates.
- Equivalent to USP G1, G2, G38 phases.
- 4.5" standard coil diameter.
- Similar phases: MXT-1, HP-1, DB-PS1, CP-Sil 5 CB, SPB-1, BP-1, ZB-1, AT-1, EC-1

■ SH-MetalX-1 Structure



ID	df	Temp. Range	7.5 m	15 m
0.25 mm	0.10 µm	-60 to 360/430 °C	-	227-36318-01
0.28 mm	0.10 µm		-	221-75734-15
0.53 mm	1.50 µm		227-36363-01	-
	1.50 µm		227-36363-02 (2 pcs.)	-

SH-MetalX-1HT SimDist

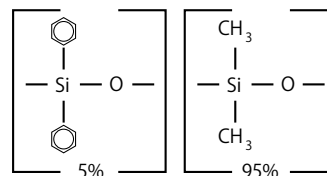
- Nonpolar phase
- Lowest bleed for longest column lifetime.
- Reliably meets all ASTM D2887, D6352, D7169, D7213, and D7500 specifications.
- 100% dimethyl polysiloxane phase allows easy comparisons to historical data.
- Individually tested for guaranteed performance.
- 7" coil diameter.
- Similar phases: MXT-1HT SimDist, DB-HT SimDis ProSteel, CP-SimDist UltiMetal, ZB-1X SimDist

ID	df	Temp. Range	5 m
0.53 mm	0.10 µm	-60 to 430/450 °C	227-36344-01

SH-MetalX-5

- Low-polarity phase: Crossbond 5% diphenyl / 95% dimethyl polysiloxane
- General-purpose columns for drugs, solvent impurities, pesticides, hydrocarbons, PCB congeners (e.g., Aroclor mixes), essential oils, and semivolatiles.
- Equivalent to USP G27 and G36 phases.
- 4.5" standard coil diameter.
- Similar phases: MXT-5, HP-5, DB-5, CP Sil 8 CB, SPB-5, BP-5, ZB-5, EC-5, AT-5

■ SH-MetalX-5 Structure



ID	df	Temp. Range	30 m
0.25 mm	0.25 µm	-60 to 430 °C	221-75743-30

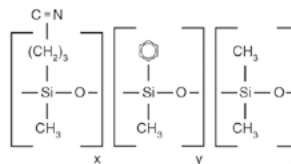
Capillary Columns

Metal Columns

SH-MetalX-1701

- Midpolarity Crossbond phase
- General-purpose columns for alcohols, oxygenates, PCB congeners (e.g., Aroclor mixes), and pesticides.
- 4.5" standard coil diameter.
- Equivalent to USP G46 phases
- Similar phase: MXT-1701, DB-1701P, DB-1701, CP-Sil 19 CB, VF-1701ms, VF-1701 pesticides, Equity-1701, BP-10, ZB-1701; ZB-1701P, At-1701

■ SH-MetalX-1701 Structure

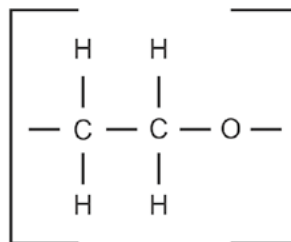


ID	df	Temp. Range	15 m
0.53 mm	1.00 μ m	-20 to 260 $^{\circ}$ C	227-36336-01

SH-MetalX-WAX

- Polar phase; Crossbond Carbowax polyethylene glycol - provides oxidation resistance
- General-purpose columns for FAMES, flavor compounds, essential oils, amines, solvents, xylene isomers, and U.S. EPA Method 603 (acrolein/acrylonitrile).
- Equivalent to USP G14, G15, G16, G20, and G39 phases.
- 4.5" standard coil diameter.
- Similar phases: MXT-Wax, HP-INNOWax, CP-Wax 53 CB, VF-WAX MS, Supelcowax-10, ZB-WAXplus, AT-WAX

■ SH-MetalX-WAX Structure



ID	df	Temp. Range	15 m
0.53 mm	1.00 μ m	40 to 240/250 $^{\circ}$ C	227-36337-01

SH-MetalX Biodiesel TG

- Fast analysis times and sharp mono-, di-, and triglyceride peaks.
- Stable at 430 $^{\circ}$ C for reliable, consistent performance.
- Similar phase: MXT-Biodiesel TG, MET-Biodiesel

ID	df	Temp. Range	14 m + 2 m
0.53 mm	0.16 μ m	-60 to 380/430 $^{\circ}$ C	227-36315-01

Capillary Columns

Fast GC Columns

Features

- › Faster Runs with less Resolution
- › More Samples in less Time
- › Best utilization of Hydrogen as Carrier Gas

The objective of Fast GC is to decrease the analysis time needed per chromatographic run. That way the total number of samples that can be analyzed is increased, and a higher throughput is achieved.

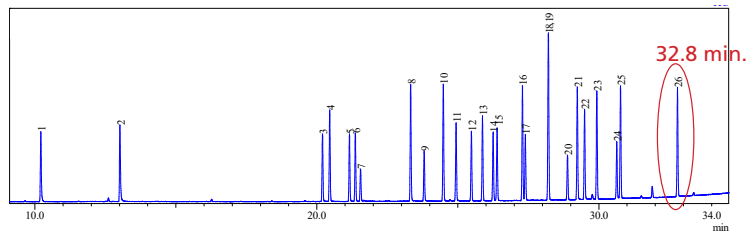
The improvement in analysis time is shown in the following chromatograms, which transition from a conventional GC run to a Fast GC run with helium and then to a Fast GC run with hydrogen. While the run time continuously improves, the resolution is maintained.

General parameters

GC: Nexus GC-2030
 Inj. Temp.: 250 °C
 Liner: Shimadzu deactivated liner for splitless
 (P/N 227-35008-01)
 MS: QP 2020 NX
 Transfer Line: 280 °C
 Source Temp.: 300 °C
 Ionization: EI

Conditions

Column: SH-I-5MS (30 m x 0.25 mm ID x 0.25 µm)
 (P/N 221-75940-30)
 Oven Temp.: 60 °C to 300 °C at 6 °C/min (hold 2 min.)
 Inj. Vol.: 1 µL splitless
 Carrier Gas: He, flow rate: 1.2 mL/min; linear Velocity: 40 cm/s

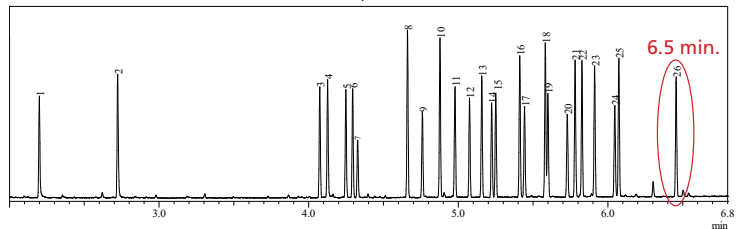


Fast GC Column



Conditions

Column: SH-I-5MS (10 m x 0.10 mm ID x 0.10 µm)
 (P/N 227-36342-01)
 Oven Temp.: 60 °C to 300 °C at 32 °C/min (hold 2 min.)
 Inj. Vol.: 0.5 µL splitless
 Carrier Gas: He, flow rate: 0.8 mL/min; linear Velocity: 56.5 cm/s

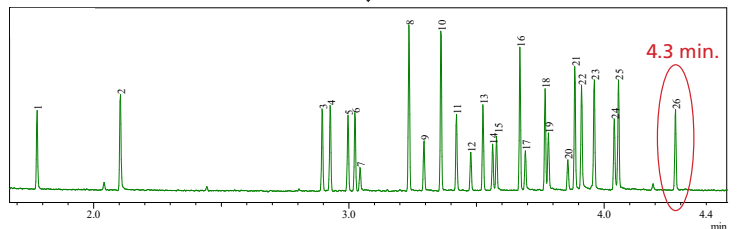


Use Hydrogen



Conditions

Column: SH-I-5MS (10 m x 0.10 mm ID x 0.10 µm)
 (P/N 227-36342-01)
 Oven Temp.: 60 °C (hold 0.5 min.) to 300 °C at 55 °C/min
 (hold 2 min.)
 Inj. Vol.: 1 µL split 1:10
 Carrier Gas: H₂, flow rate: 0.8 mL/min; linear Velocity: 78.7 cm/s



Selectivity	ID	df	10 m	20 m
SH-1	0.10 mm	0.40 µm	-	227-36330-01
SH-I-1MS	0.15 mm	0.15 µm	-	227-36001-01
	0.18 mm	0.18 µm	-	221-75921-20
		0.36 µm	-	227-36003-01
SH-I-5MS	0.10 mm	0.10 µm	227-36342-01	-
	0.18 mm	0.18 µm	-	227-36015-01
		0.30 µm	-	227-36016-01
	0.36 µm	-	227-36017-01	
SH-5Sil MS	0.18 mm	0.18 µm	-	221-76195-20
SH-I-5Sil MS	0.10 mm	0.10 µm	227-36317-01	-
	0.15 mm	0.15 µm	-	227-36030-01
	0.18 mm	0.18 µm	-	227-36033-01
0.36 µm		-	227-36034-01	
SH-I-XLB	0.18 mm	0.18 µm	-	227-36309-01
SH-624	0.10 mm	0.50 µm	-	227-36332-01
SH-I-17	0.18 mm	0.18 µm	-	227-36061-01
SH-PolarWax	0.10 mm	0.10 µm	227-36343-01	-
	0.18 mm	0.18 µm	-	227-36357-01

Peaks

- Hexachloro-1,3-butadiene
- Dichlobenil
- α-HCH
- Hexachlorobenzene
- β-HCH
- γ-HCH
- Quintozen
- PCB 28
- Heptachlor
- PCB 52
- Aldrin
- Telodrin
- Isodrin
- Heptachlor exo-epoxide
- Heptachlor endo-epoxide
- PCB 101
- α-Endosulfan
- 4,4-DDE
- Dieldrin
- Endrin
- PCB 118
- 4,4-DDD
- PCB 153
- 4,4-DDT
- PCB 138
- PCB 180

Capillary Columns

Guard Columns

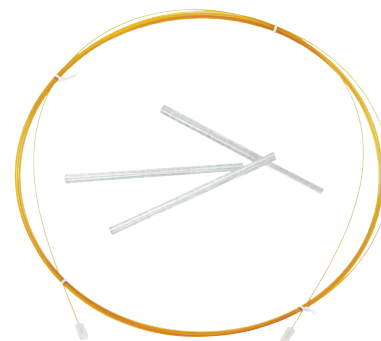
SH-I Guard / Retention Gap Columns

- Extend column lifetime.
- Excellent inertness - obtain lower detection limits for active compounds.
- Sharper chromatographic peaks by utilizing retention gap technology.
- Maximum temperature: 360 °C.

ID	5 m	10 m
0.25 mm	227-36303-01	227-36304-01
0.32 mm	227-36305-01	227-36306-01
0.53 mm	227-36307-01	227-36308-01

SH-Particle Trap (for PLOT columns)

- Includes two Press-Tight connectors and a 2.5 m column.
- Protects detector and valves; connects between column and detector or valve.
- Eliminates detector spikes and scratches in valve rotors.



* For information about Press-Tight® connectors, please refer to page 54.

Description	P/N
SH-Particle Trap for 0.32 mmID PLOT Columns	227-36800-01
SH-Particle Trap for 0.53 mmID PLOT Columns	227-36800-02

Capillary Columns

Guard Columns

SH-IP Guard Columns

- Tested with a comprehensive test mix to ensure high inertness.
- Useful for a wide range of applications.
- Use with most common solvents.
- Maximum temperature: 360 °C.

Description	ID	5 m	10 m
SH-IP Guard Column	0.25 mm	227-36320-01	227-36321-03
	0.32 mm	227-36320-02	227-36321-04
	0.53 mm	227-36320-03	227-36321-01

SH Guard Columns Polar Deactivation

- Polar polyethylene glycol deactivation
- Tested with a comprehensive test mix to ensure high inertness.
- Polyethylene glycol deactivation layer provides optimum wettability for polar compounds.
- Minimize peak splitting when using polar solvents such as methanol or water.
- Compatible with SH-PolarWax, SH-225 and SH-2330 capillary columns.
- Maximum temperature: 280 °C.

Description	ID	5 m
SH Guard Column Polar Deactivation	0.25 mm	227-36335-01
	0.32 mm	227-36335-02
	0.53 mm	227-36335-03

SH Guard Columns Base Deactivated

- Tested with a basic amine test mix.
- Excellent inertness for basic compounds.
- Recommended for use with SH-5 Amine, SH-35 Amine, SH-Volatile Amine, and SH-PolarX capillary columns.
- Batch test chromatogram included.
- Maximum temperature: 315 °C.

Chemists using guard columns in the analyses of basic compounds frequently observe peak tailing and low recovery. This happens because conventionally deactivated tubing surfaces can be adsorptive to basic compounds. Shimadzu offers base-deactivated guard columns, as well as base-deactivated inlet liners, for completely inert sample pathways.

Description	ID	5 m
SH Guard Column Base Deactivated	0.25 mm	227-36334-01
	0.32 mm	227-36334-02
	0.53 mm	227-36334-03

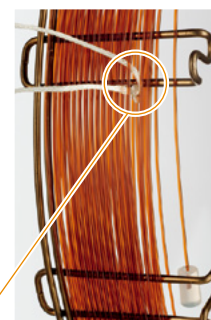
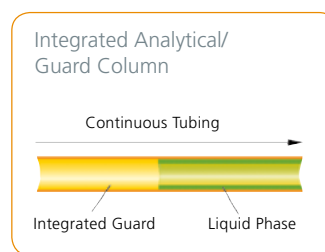
SH-MetalX-Siltek Guard Column

- Tested with a comprehensive test mix to ensure high inertness.
- Revolutionary deactivation process for superior inertness.
- Analyze active samples accurately; ideal for chlorinated pesticide analysis (reduces endrin breakdown to less than 1%)
- Maximum temperature: 380 °C.

ID	ID	10 m
SH-MetalX-Siltek Guard	0.53 mm	227-36319-01

Integrated Guard Columns

- No leaks for a more robust method.
- No column connections for easier, faster maintenance.
- No peak distortions due to connector dead volume and thermal capacity.



String indicates where the analytical column begins

Column	ID	df	Length	With 2m Integrated Guard	With 5m Integrated Guard	With 10m Integrated Guard
SH-I-1MS	0.25 mm	0.10 µm	15 m	227-36346-01	-	-
SH-I-5Sil MS	0.25 mm	0.25 µm	30 m	-	221-76161-30	221-76162-30
SH-1	0.25 mm	0.25 µm	30 m	-	221-75719-31	-
	0.53 mm	1.00 µm	30 m	-	221-75731-31	-
	0.53 mm	1.50 µm	30 m	-	227-36333-01	-
	0.53 mm	5.00 µm	30 m	-	221-75734-31	-
SH-5	0.25 mm	0.25 µm	30 m	-	221-76153-05	221-76153-30
	0.25 mm	1.00 µm	30 m	-	221-76179-30	-
	0.32 mm	0.25 µm	30 m	-	221-76177-30	-
	0.32 mm	0.25 mm	60 m	-	221-76177-60	-
	0.32 mm	1.00 µm	30 m	-	221-76180-30	-
SH-5MS	0.53 mm	5.00 µm	30 m	-	221-76154-35	-
	0.25 mm	0.10 µm	30 m	-	221-76189-30	-
	0.25 mm	0.25 µm	15 m	-	221-75861-15	-
	0.25 mm	0.25 µm	30 m	-	221-75861-05	221-75861-10
SH-1301	0.53 mm	3.00 µm	30 m	-	221-76164-35	-
SH-624	0.25 mm	1.40 µm	30 m	-	221-76183-30	-
	0.32 mm	1.80 µm	30 m	-	221-76157-35	-
	0.53 mm	3.00 µm	30 m	-	221-76158-30	-
SH-1701	0.25 mm	0.25 µm	30 m	-	221-76185-30	-

Capillary Columns

Accessories and Supplies

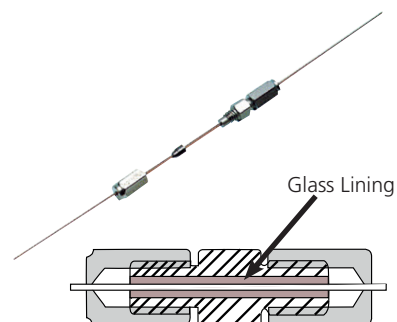
Connection Parts for Capillary Columns Nuts and Ferrules



Picture	Description	Specification	P/N
1	Nut with slit (1 pc)	Detector side of GC-2010/2010 Plus/2014/2025	221-32705
2	Nut without slit (10 pcs)	Injection unit side of GC-2010/2010 Plus/2014/2025	221-16325-81
	Nut without slit (5 pcs)	For GCMS	670-11009
	Graphite Ferrule 0.5 (10 pcs)	For 0.1 - 0.32 mmID columns	221-32126-05
	Graphite Ferrule 0.8 (10 pcs)	For 0.53 mmID columns	221-32126-08
	Graphite Vespel Ferrule (10 pcs)	For 0.1 - 0.25 mmID columns (ideal for GCMS)	670-15003-03
	Graphite Vespel Ferrule (10 pcs)	For 0.32 mmID columns (ideal for GCMS)	670-15003-04
3	Graphite Vespel Ferrule (10 pcs)	For 0.53 mmID columns (ideal for GCMS)	670-15003-07
	SilTite Metal Ferrule (10 pcs)	For 0.1 - 0.25 mmID columns	221-72563-04
	SilTite Metal Ferrule (10 pcs)	For 0.32 mmID columns	221-72563-05
4	SilTite Metal Ferrule (10 pcs)	For 0.53 mmID columns	221-72563-08
	SilTite Metal Ferrule (10 pcs)	For 1/32" ID columns	221-75200-04
	SilTite Kit (10 pcs ferrules, 2 pcs nuts)	For 0.1 - 0.25 mmID columns	221-75200
	SilTite Kit (10 pcs ferrules, 2 pcs nuts)	For 0.32 mmID columns	221-75200-01
	SilTite Kit (10 pcs ferrules, 2 pcs nuts)	For 0.53 mmID columns	221-75200-02
	SilTite Kit (10 pcs ferrules, 2 pcs nuts)	For 1/32" ID columns	221-75200-03
	SilTite Nut (5 pcs)	-	221-75186

Glass-Lined Stainless Steel Joint

This is a compact joint to connect capillary columns. The glass lining minimizes the adsorption of sample components. To ensure a positive connection, it is necessary to cut the ends of capillary columns properly to match each other.



Description	Applicable Capillary OD (mm)	P/N
Mini-union (with 5 pcs graphite ferrules)	0.4	670-11424-11
	0.5	670-11424-12
	0.8	670-11424-13
Graphite Ferrule (10 pcs)	0.4 - 0.5	670-11424-21
	0.8	670-11424-22

Connection Parts for Capillary Columns

Press-Tight Connectors

This connector is used to connect capillary columns easily by inserting the columns into the connector from both ends. When the columns are coated with polyimide resin, the connection will remain tight almost permanently and will be completely free of leakage.

Applicable to 0.35 mm to 0.8 mm OD capillary columns.



Description	P/N
Press-Tight Connector (5 pcs)	221-38102-91
Press-Tight Connector (5 pcs with 5 g polyimide resin)	221-38102-92

Main use of Press-Tight connectors

- Connection of broken capillary columns
The connectors are unobtrusive.
- On-column sample injection
Any capillary columns can be used in on-column injection mode by connecting a short wide-bore capillary columns to the inlet of the column.
- Retention gap method
An about 2 meters long capillary tube with no stationary phase, which is connected to the head of analytical capillary column, prevents peaks from being split.
- Column conditioning
A short capillary tube, which is connected to the outlet of the column, prevents air (oxygen) from diffusing into the column, thus preventing the deterioration of liquid phase which is kept at a high temperature.
- Stable storing of capillary columns
Deterioration by air and contamination can be prevented by connecting the both ends with a capillary tube.

Capillary Columns

Accessories and Supplies

Capillary Column Accessory Set

This set contains tools and supplies which are used to ensure high analytical productivity in capillary gas chromatography.

P/N	221-38652-91
-----	--------------

The set includes:

- Graphite ferrules
- Nuts
- Soap film flow meter
- Capillary tube cutter
- Spanner
- Tweezers
- Magnifying lens
- Ruler (stainless steel, 150mm)
- Accessory Box
- Pin vise
- Drill
- Press-Tight® connectors
- Polyimide resin
- Compact vise
- Adapter Socket (MM-C)
- Magnet grips



Capillary Tube Cutters

To cut a fused silica capillary tube, score the desired part with the above cutters, which have a ceramic blade, and snap at the position. The figure on the right shows an easy-to-use pen type. A spare blade is included.

Picture	Description	P/N
1	Capillary Tube Cutter (pen type with 1 pc spare blade)	221-50595-91
	Capillary Tube Ceramic Cutter (3 pcs)	221-75181



1



Find all products 24/7 in our Webshops
www.shimadzu.eu/shimadzu-goes-webshop



Find our full portfolio of columns and accessories
www.shimadzu.eu/columns-and-consumables



Shimadzu Europa GmbH
www.shimadzu.eu

For Research Use Only. Not for use in diagnostic procedure.

The content of this publication shall not be reproduced, altered or sold for any commercial purpose without the written approval of Shimadzu.

The information contained herein is provided to you „as is“ without warranty of any kind including without limitation warrentis as to its accuracy or completeness. Shimadzu does not assume any respnsibility or liability for any damage, wether direct or indirect, relating to be the use of this publication. This publication is based upon the information available to Shimadzu on or before the date of publication, and subject to change without notice.